

# ARGENTINA

## Soybean Sector



Ministerio de Agroindustria  
Presidencia de la Nación

### ☐ CLIMATE CHANGE

- NIÑO / NIÑA / NEUTRAL
- RAIN PERIODS
- FLOODS

### ☐ REDUCTION OF EXPORT TAXES

- 0.5% PER MONTH SINCE 1 JANUARY 2018 / 6% PER YEAR

### ☐ BIODIESEL ISSUE

- AD/CVD INVESTIGATIONS IN PERU AND THE UNITED STATES
- REDUCTION OF AD/CVD IN THE EUROPEAN UNION

### ☐ FARMERS' DECISIONS

- SELL OR NOT SELL
- INTERNATIONAL PRICES
- EXCHANGE RATE OF USD
- INVESTMENT OPPORTUNITIES

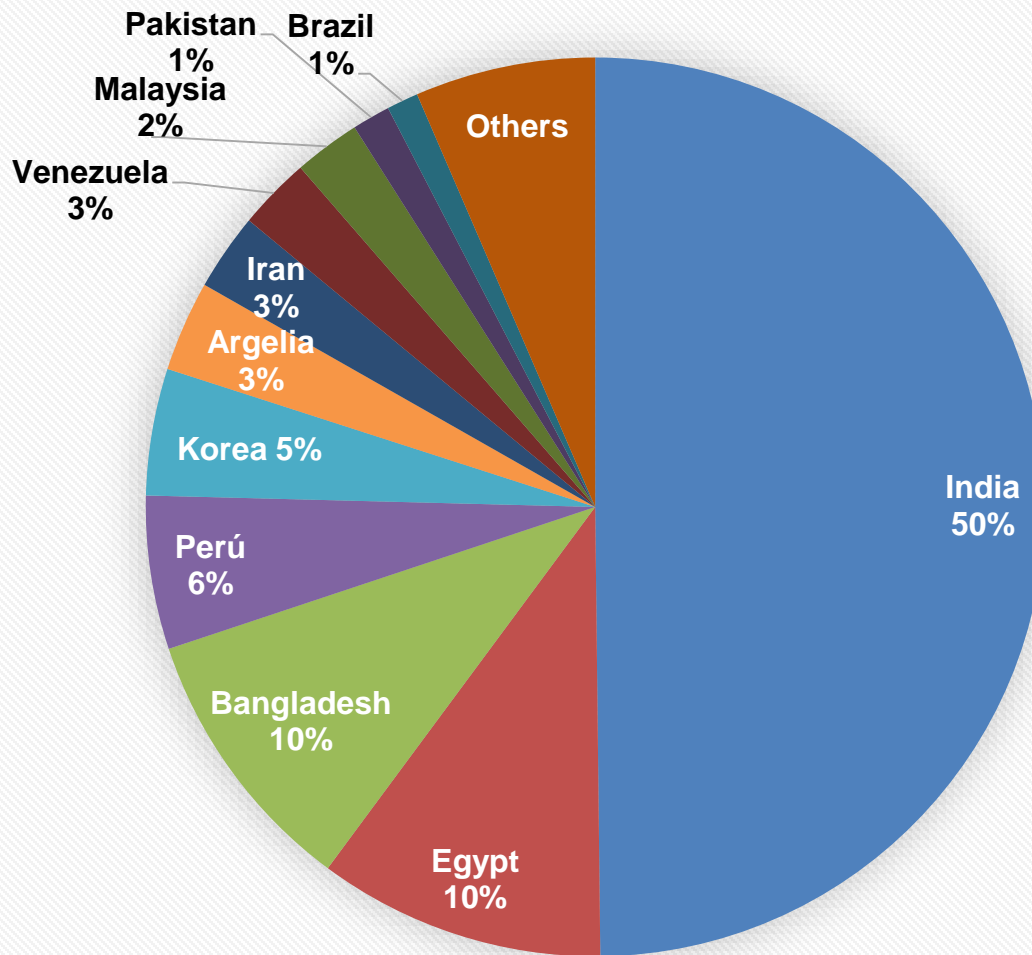
## ARGENTINA SOYBEAN SUPPLY - DEMAND

Mkt. Year	2017/18**	2016/17*	2015/16
<i>(mill/ton)</i>			
Beginning Stock	5,60	8,10	6,80
Production	58,00	55,00	58,80
Harvested área (mill/has.)	19,00	18,00	20,48
Yield (ton/ha)	3,05	3,06	2,87
<b>Supply</b>	<b>63,60</b>	<b>63,10</b>	<b>65,6</b>
Crushing	44,50	44,00	43,00
Exports	9,00	8,50	9,00
Seed and others uses	5,20	5,00	5,50
<b>Demand</b>	<b>58,70</b>	<b>57,50</b>	<b>57,5</b>
<b>Ending Stock</b>	<b>4,90</b>	<b>5,60</b>	<b>8,10</b>

\* Estimated

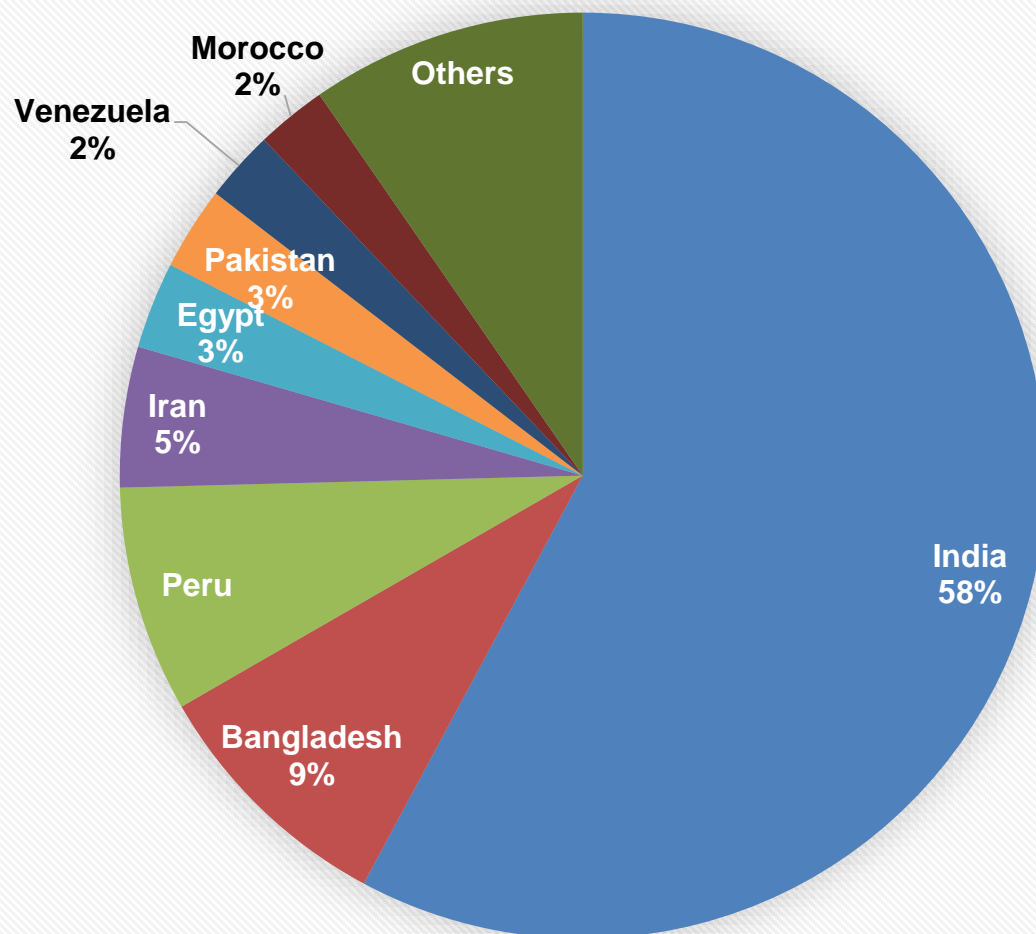
\*\* Proyected

## EXPORT MARKETS 2016



**TOTAL 5.624.030 Tn**

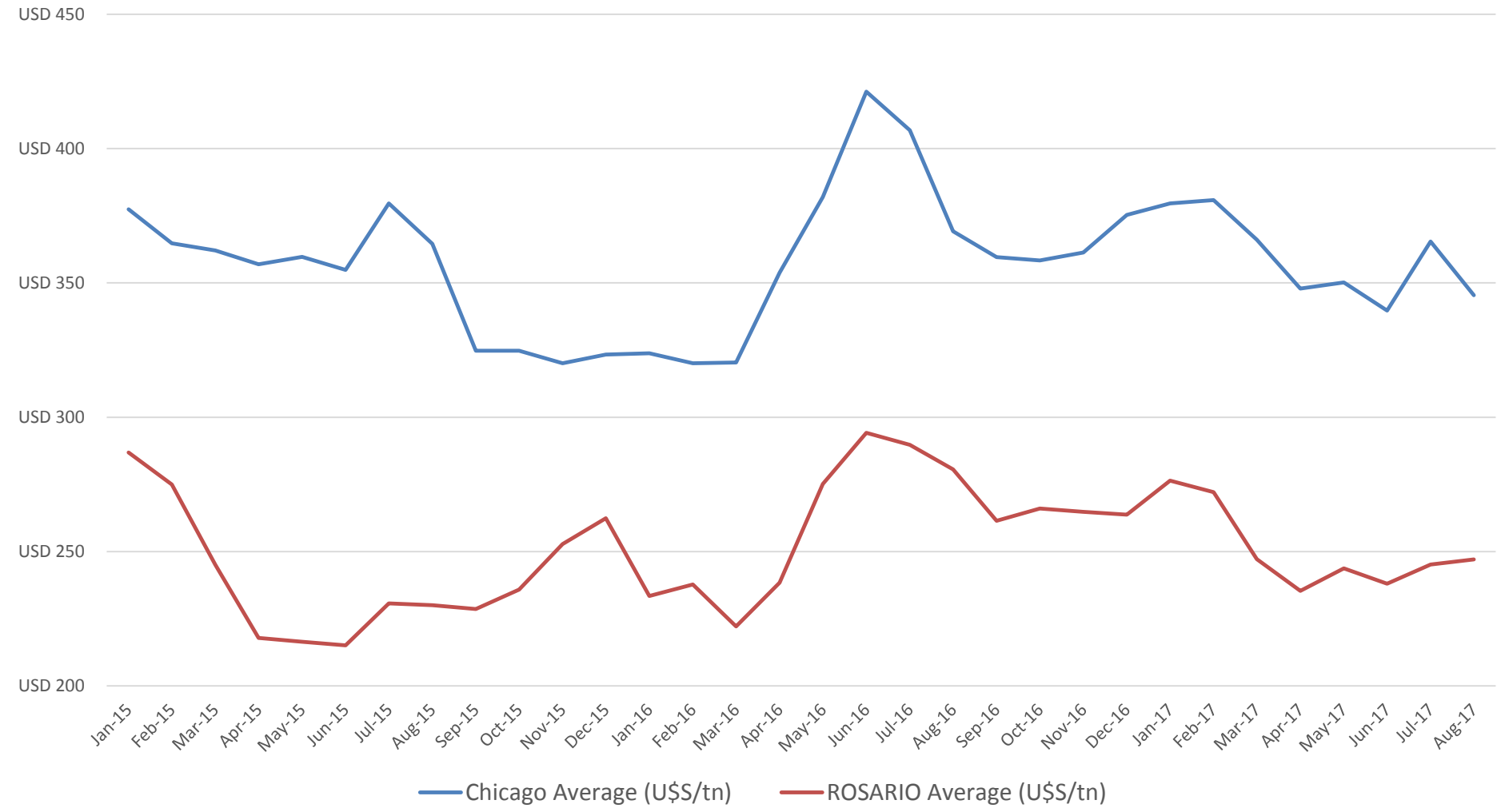
## EXPORT MARKETS 2017



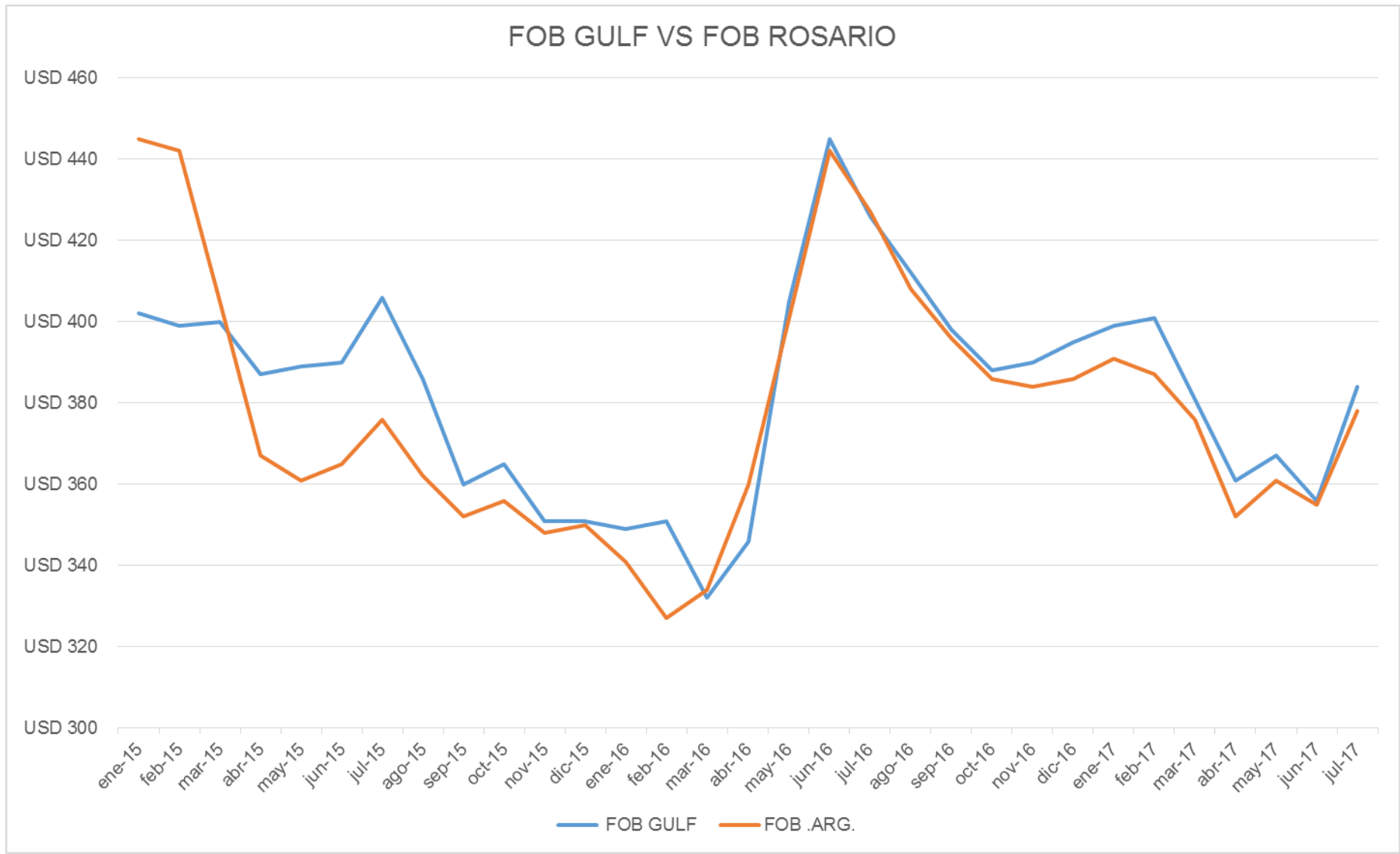
**TOTAL 2.972.132 Tn\***

# SOYBEAN PRICES: Rosario vs Chicago •

SOYBEANS - PRICES



# SOYBEAN: FOB GULF vs. ARGENTINA •





Ministerio de Agroindustria  
Presidencia de la Nación