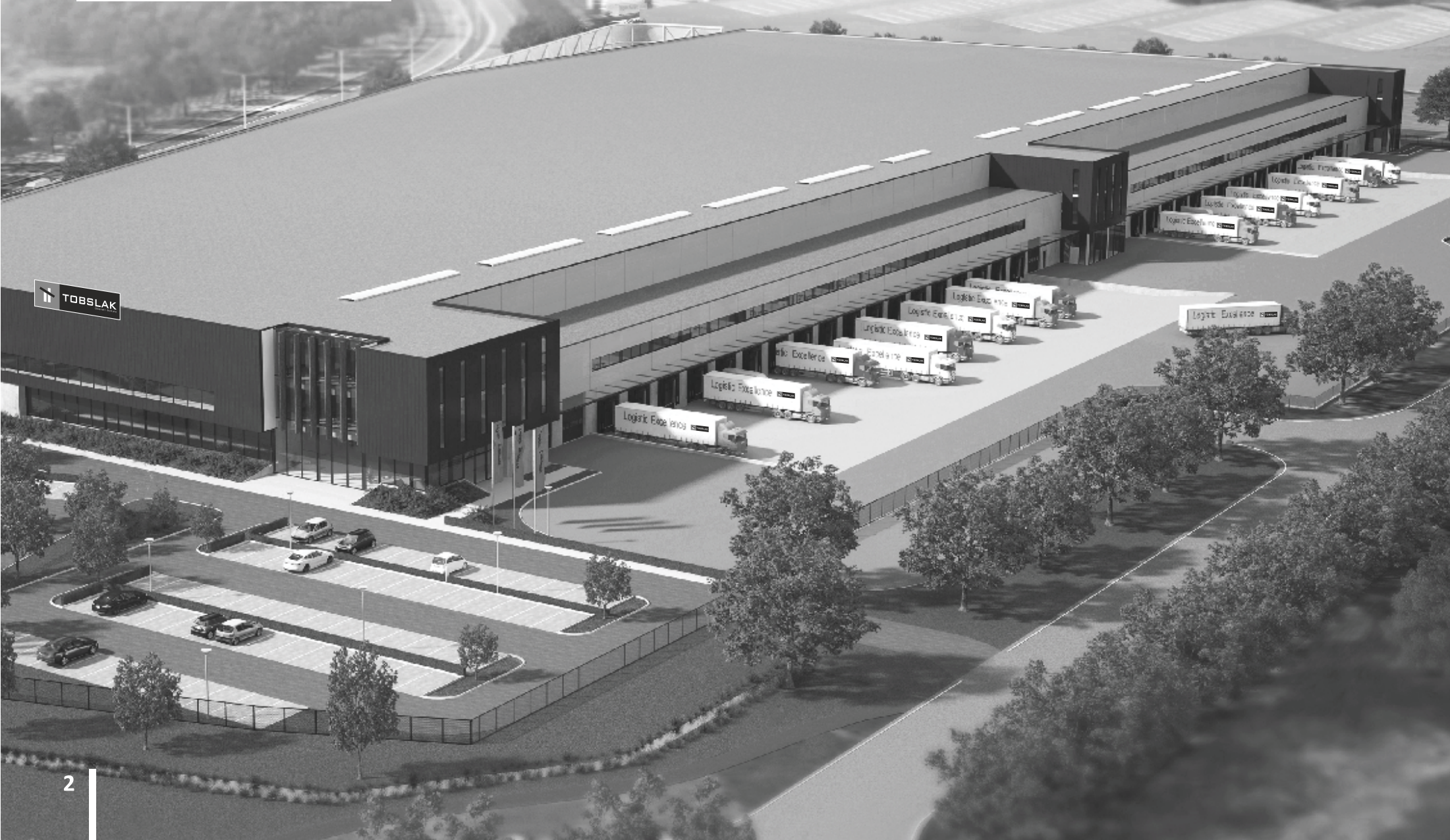




PRODUCT LOG





BRIEF ABOUT TOBSLAK

Tobslak offers a full range of products to protect, waterproof, repair, and restore concrete, masonry, brick, stone and wooden substrates. In addition to providing the highest quality products, we are devoted to supporting our clients with technical expertise and practical know how gained over many years of on-the-job experience. We follow global standards in building protection and in waterproofing, floor, façade paint and wood protection, also we provide complete product systems at one source, from cellar to roof.

The company has gained market leadership internationally based with many offices throughout the world. For more than three decade, Tobslak has specialized in all types of Facade Paints, Wood coating, Epoxy flooring and Car park coatings, Waterproofing, high quality, long lasting external facade and internal paints and coatings. Our coating systems are not just robust and reliable, they are also gentle on the environment and are physiologically safe.

Tobslak provides solutions for complete building protection with its wide range of product systems in the following segments :

- Decorative and Protective Paints
- Waterproofing Buildings/Restoration of Masonry Work
- Floor Coating Systems
- Wood Preservation/Refinement
- Road Marking Systems
- Metal Protections/ Structural Restoration

Tobslak is a establish in developing 100% water-based products which conform to low VOC directives and green building technology.

We as a global brand always prefer to the development of water-based, non-polluting products with environmental protection. To match world-class quality, we have an in-house R&D and QC department, confirm long term reliability of our products. We as brand an undisputed leader in the development and production of expert system for the construction industry. Entire product systems have impressive references, test certificates & test reports which provide proof of the strengths of our coating systems.

“Tobslak – Conserving the Value of Buildings”





DECORATIVE RANGE

INTERIOR / EXTERIOR UNDER COATS



Tobslak Interior primer

Tobslak Primer is water based acrylic primer suitable for priming mineral substrate. It has good opacity and whiteness, which helps to improve the appearance of the emulsion top coats. Tobslak range Primer can be applied on a wide range of interior cement plasters, ceilings, asbestos sheets, concrete etc. as undercoat.

Packing: 1 L, 4 L, 20 L

Tobslak Exterior primer

Tobslak Primer is an acrylic copolymer based alkali resistant primer sealer. To be used for priming exterior cement plaster and concrete substrates. May be used for external cement plaster, concrete substrates.

Packing: 1 L, 4 L, 20 L

Tobslak Anti-Alkali Hydro Primer

Hydro Primer is used as a strengthening and water repelling primer for sanding, cementitious substrates such as P II and P III renders underneath Silicone & Acrylic and other synthetic resin bound coating systems. It is also suitable as a primer for interior renders, gypsum renders and gypsum plaster board. Apply Hydro Primer evenly on sanding, highly absorbent substrates once or twice, wet-on-wet, if necessary.

Packing: 20Ltr, 30Ltr, 50Ltr & 200Ltr

Tobslak CF Wall Putty

Tobslak CF is specially designed as a polymer modified cementitious filler for filling of joints, undulations, roughness on mineral facades like cement plasters, ceiling, asbestos sheets, concrete etc. as undercoat

Packing: 20kg & 40kg

Tobslak Acrylic Wall Putty

Copolymer based putty filler, ideal for smoothing walls, filling unsightly cracks and hiding any imperfections on the interior walls.

Packing: 5 kg, 20kg & 40kg

PRIMERS

SPREADING

100 – 120 sq.ft/ltr/coat*

THINNING

40 - 50% with clean water

*Actual coverage may vary from the quoted coverage due to factors such as method and condition of application and surface roughness and porosity.



DECORATIVE RANGE

INTERIOR STANDARD FINISHES



Niklas-100

Niklas-100 is standard emulsion paint. Our easy to use emulsion paint rich, creamy and perfect colour Ideal for most rooms in your house. It has exceptional ease of application and dries to a smooth, matt, washable finish.

Finish: Matt.

Application: By brush, rollers, conventional or airless spray.

Thinning: Supplied ready for use. However, on new, bare and porous surfaces and for spray application Niklas-100 Matt Emulsion can be thinned up to 40% with clean water for first coat on new surfaces to aid penetration into porous surfaces. Avoid over-thinning as this will affect the opacity. Stir well before use.

Drying Times: Touch Dry: 1 – 2 hours. Re-coatable in 3- 4 hours.

Equipment Cleaner: Water.

Pack Sizes: 1 L, 4 L, and 20 L

Notes:

1. When over coating walls in sound condition with the same shade, the application of 1 coat may be sufficient.
2. When overcoating a dark colour with a light shade, the application of three coats may be necessary.
3. Choice of colours for technical reasons (often dependent upon pigment origin and type) an additional coat will often be required when using certain shades (particularly Bright Yellows, Greens, Oranges, Reds refer colour card for details). The use of these colours should be avoided on medium and low-cost projects. Where these low opacity colours are to be used on bare plaster, or for overcoating dark colours, the application of a first coat of a paler shade offering superior coverage is recommended. Consult Tobslak technical team for further details.

Drying Time :

2 to 3 hours.

Thinner :

Water

Recommended System :

One coat of Tobslak interior primer coat.
Two or more coats of Niklas-100 interior emulsion.

*Actual coverage may vary from the quoted coverage due to factors such as method and condition of application and surface roughness and porosity.



DECORATIVE RANGE

INTERIOR STANDARD FINISHES

Niklas-300

(Matt Washable Coating)

Niklas-300 is a top quality matt emulsion 20 times more scrubbable than our standard matt emulsion which improves stain resistance. Wipe away marks and stains to keep that freshly painted look for longer. It has no penetration of normal household liquids like tea, juice, ketchup etc, allowing these to be simply scrubbed off with water without leaving stains on the surface. However, some stubborn stains might still need to be cleaned with a mild detergent. Suitable for new and previously painted plaster, cement, brick, stone, asbestos softboard and hardboard sheets etc. It has exceptional ease of application and dries to a smooth, matt washable finish.

Characteristics: Manufactured from the finest quality, carefully selected pigments, finely grinded in a co-polymer emulsion with active additive.

Advantages: Washable. Easy wipe. Splash and stain resistant. More durable than other matt paints. Excellent hiding power. Quick drying. Easy to apply. No primer required on new and sound previously painted masonry surfaces. Wide colour range. Smooth matt finish. Suitable for interior and exterior use. Allows new walls, still containing moisture to breathe/dry out.

Finish: Matt.

Application: By brush, rollers, conventional or airless spray.

Thinning: Supplied ready for use. However, on new, bare and porous surfaces and for spray application Niklas-300 Matt Emulsion can be thinned up to 40% with clean water for first coat on new surfaces to aid penetration into porous surfaces. Avoid over-thinning as this will affect the opacity. Stir well before use.

Drying Times: Touch Dry: 1 – 2 hours. Re-coatable in 3- 4 hours. **Equipment Cleaner:** Water **Pack Sizes:** 1 L, 4 L, and 20 L

Notes:

1. When over coating walls in sound condition with the same shade, the application of one coat may be sufficient.
2. When overcoating a dark colour with a light shade, the application of three coats may be necessary.
3. Choice of colours for technical reasons (often dependent upon pigment origin and type) an additional coat will often be required when using certain shades (particularly Bright Yellows, Greens, Oranges, Reds refer colour card for details). The use of these colours should be avoided on medium and low-cost projects. Where these low opacity colours are to be used on bare plaster, or for over coating dark colours, the application of a first coat of a paler shade offering superior coverage is recommended. Consult Tobslak Technical team for advice.
4. For chemical reasons, certain dark colours offer less resistance to fading when subjected to ultra violet light, especially in tropical climates. Consult Tobslak Technical team for further details.



- Superior hiding
- Low VOC
- Colour fasten

Spreading

Surface type	New or Unpainted Sqft./Ltr.	Previously painted Sqft./Ltr.
Smooth Plaster	110-130	120-140
Cement-Sand Plaster	110-120	120-140

Drying Time :

2 to 3 hours.

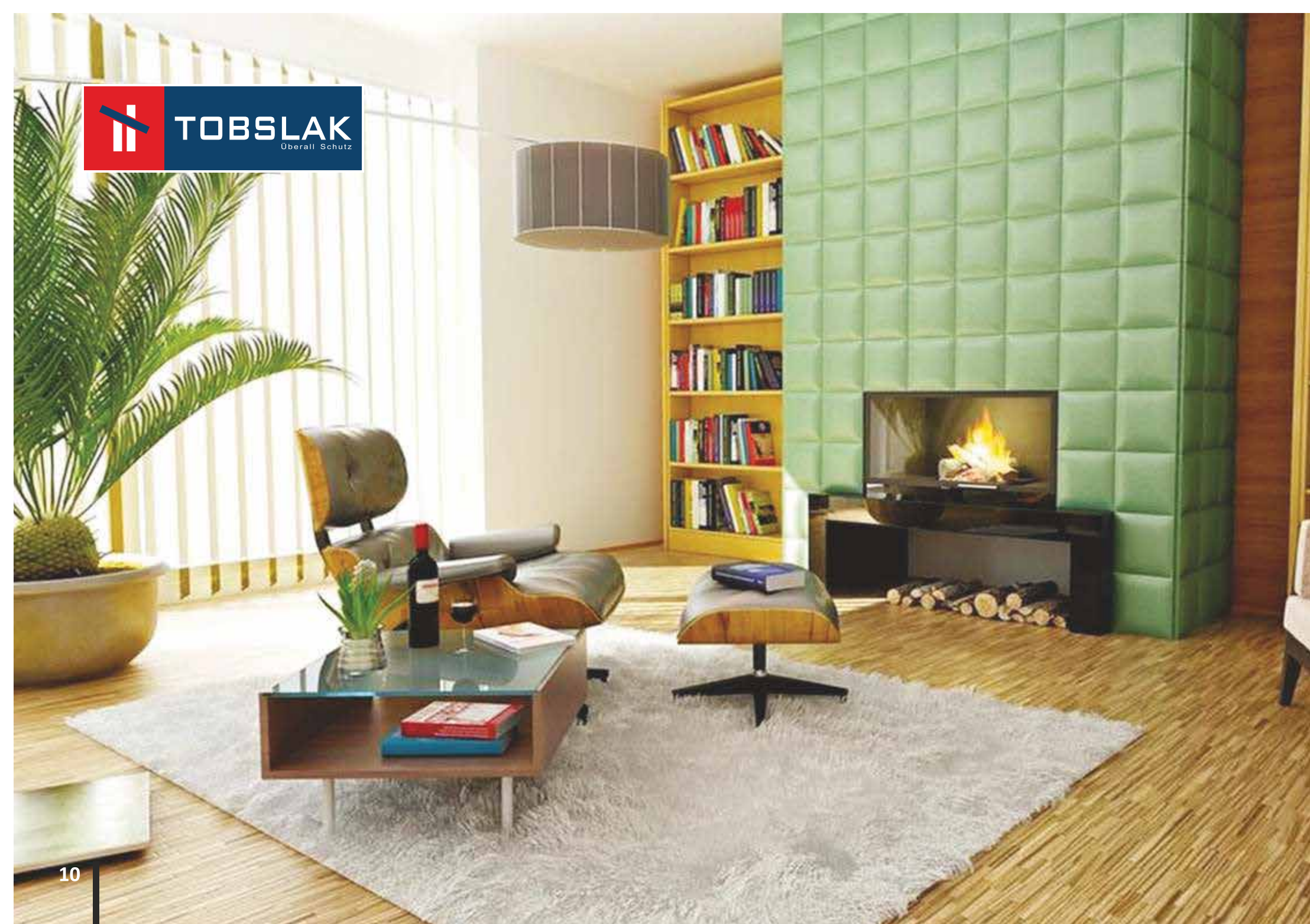
Thinner :

Water

Recommended System :

One coat of Tobslak interior primer coat.
Two or more coats of Niklas-300 interior emulsion.

*Actual coverage may vary from the quoted coverage due to factors such as method and condition of application and surface roughness and porosity.



DECORATIVE RANGE

INTERIOR PREMIUM FINISHES

Niklas Haus

(Soft-sheen Finish)

Niklas Haus is a superior, high quality acrylic interior paint that offers an elegant finish with exceptional coverage. Formulated to provide a tough, durable finish with rich color depth for any residential or commercial application. Recommended for use on properly prepared and primed or previously painted drywall, plaster, masonry surface .

Characteristics: High scrub resistance, making it highly washable. Suitable for areas of high traffic which require regular cleaning. Contains micro silver to fight bacterial and fungus growth.

Advantages: Washable, odour free & has an attractive sheen finish. Easy to apply by Brush or Roller. Minimum down-time for key working areas. Tough and washable finish. Economic maintenance. Good opacity. Fights bacterial and fungal growth.

Finish: Soft Sheen

Application: By brush, rollers, conventional or airless spray.

Thinning: Supplied ready for use. However, on new, bare and porous surfaces and for spray application Niklas Haus Emulsion can be thinned up to 40% with clean water for first coat on new surfaces to aid penetration into porous surfaces. Avoid over-thinning as this will affect the opacity. Stir well before use.

Drying Times: Touch Dry: 1 – 2 hours. Re-coatable in 3- 4 hours.

Equipment Cleaner: Water **Pack Sizes:** 1 litre, 4 litres, and 20 litres

Notes:

1. When over coating walls in sound condition with the same shade, the application of one coat may be sufficient.
2. When overcoating a dark colour with a light shade, the application of three coats may be necessary.
3. Choice of colours for technical reasons (often dependent upon pigment origin and type) an additional coat will often be required when using certain shades (particularly Bright Yellows, Greens, Oranges, Reds refer colour card for details). The use of these colours should be avoided on medium and low-cost projects. Where these low opacity colours are to be used on bare plaster, or for over coating dark colours, the application of a first coat of a paler shade offering superior coverage is recommended. Consult Tobslak Technical team for advice.
4. For chemical reasons, certain dark colours offer less resistance to fading when subjected to ultra violet light, especially in tropical climates. Consult Tobslak Technical Team for further details.



- Superior hiding
- Low VOC
- Colour fasten

- Premium 100% acrylic
- Moon Lite Luxurious Silk Finish
- Best in class Washability
- Low VOC
- Colour fasten
- Finish: MPI Gloss level 2

SPREADING

Surface type	New or Unpainted Sqft./Ltr.	Previously painted Sqft./Ltr.
Smooth Plaster	110-130	120-140
Cement-Sand Plaster	110-120	120-140

Recommended System :

One coat of Tobslak interior primer coat.
Two or more coats of Niklas Haus interior emulsion.

*Actual coverage may vary from the quoted coverage due to factors such as method and condition of application and surface roughness and porosity.



DECORATIVE RANGE

INTERIOR LUXURY FINISHES

Niklas Glanz

(Luxury Gloss Finish)

High quality, interior wall paint with micro-silver as a film preservative against infestation with mould. Luxury Emulsion is a smooth hi-sheen finish. Emulsion offers superior joie de vivre on the walls making your home more eye-catching. Completely safe for use in Nurseries, Children & Elders Bed Rooms, Schools, Hospitals, Restaurants, Hotels, Public buildings etc.

Niklas Glanz emulsion is formulated to prevent fungal growth on ceiling & walls. It also offers an exceptional anti-bacterial screen that kills $\geq 99\%$ of microorganisms according to DIN 32645:2008-11 (DIN 2008).

Niklas Glanz Emulsion toughens your walls against rough stains, increases durability and strengthens the paint film. It is comparable to the best interior emulsions across the world. Micro silver enhanced stain resistance that protects your walls for all kinds of stains. The toughest household stains can be reduced to a large extent, while water-based stains like tea, coffee etc. are completely removed.

Anti-Bacterial and Anti-Fungal Shield Luxury Emulsion is formulated to prevent microorganisms' growth on walls.

Tested according to DIN EN 71-3 "Safety for toys - migration of certain elements"

Technical Information

A. Sheen levels: 14 - 24 at 60 deg GH c. Flash point IS101/1987 Part 1, Sec 6: NA

B. Drying time: Surface dry time 30 min

Notes:

1. When overcoating walls in sound condition with the same shade, the application of one coat may be sufficient.
2. When overcoating a dark colour with a light shade, the application of three coats may be necessary.
3. Choice of colours for technical reasons (often dependent upon pigment origin and type) an additional coat will often be required when using certain shades (particularly Bright Yellows, Greens, Oranges, Reds refer colour card for details). The use of these colours should be avoided on medium and low-cost projects. Where these low opacity colours are to be used on bare plaster, or for overcoating dark colours, the application of a first coat of a paler shade offering superior coverage is recommended. Consult Tobslak Technical Team for further details.



Anti-Bacterial and Anti-Fungal

With micro-silver as a film preservative

SPREADING

250 – 300 sq.ft/ltr/coat*

Methodological information

Drying time - Surface dry time of 30 min,
with 5-6 hours between 2 coats

Sheen level- 14 - 24 at 60 deg GH

Pot life-To be used within 36 hours

Recommended System :

One coat of Tobslak interior primer coat.
Two or more coats of Niklas Glanz interior emulsion.

*Actual coverage may vary from the quoted coverage due to factors such as method and condition of application and surface roughness and porosity.



EXTERIOR TOP COATS

EXTERIOR STANDARD FINISHES

Cocoon-200

Cocoon-200 is standard exterior emulsion, moisture resistant, breathable, gives protection from weather conditions, , good opacity, wide colour range, and environmentally friendly exterior emulsion paints.

Advantages: Long term protection. Reduced maintenance costs. Hides surface imperfections.

Finish: Matt.

Application: By brush, roller or airless spray equipment.

Thinning: First coat can be thinned up to 50% with clean water. Subsequent coats can be thinned up to 60%. Avoid over thinning as this will affect the opacity. Stir well before use.

Drying times: Touch Dry: 1-2 hours. Re-coatable after 3-4 hours.

Equipment cleaner: Water and household detergent.

Packing: 1 L, 4 L and 20 L

Cocoon-400

Cocoon-400 Finishing Paint is to withstand extreme steamy environment of high rainfall, humidity and heat. Excellent protection against UV rays, an environmentally correct, opaque paint with light resistant pigments. The paint is also anti-fungus and anti-mould, easy to apply and protects the substrate for many years. The elastic coating does not peel, is colourfast, weather resistant, odourless, water resistant, matt and scrub resistant according to DIN 53778. "

Cocoon-400 provides best protection against alkali and UV degradation thus ensuring that the shade doesn't fade for a longer time and the paint lasts longer.

Technical Detail

Drying time	-	Surface dry time 30 min
Sheen level	-	6 - 7 at 60 deg GH
Pot Life	-	36 hrs.

Packing: 1 L, 4 L and 20 L



SPREADING

110 – 130 sq.ft/ltr/coat*

Recommended System :

One Coat of Tobslak exterior primer coat.

Two or more coats of Tobslak exterior

Cocoon-200 / 400.

*Actual coverage may vary from the quoted coverage due to factors such as method and condition of application and surface roughness and porosity.



EXTERIOR TOP COATS

EXTERIOR PREMIUM FINISHES

Cocoon Pro

Cocoon Pro is scientifically advanced exterior emulsion which protects exterior walls from dampness in addition to algae and fungus. Cocoon Pro have its unique water resistant technology bridge hairline cracks and prevents water absorption, preventing dampness in exteriors & interiors of the house. it is a high quality 100% acrylic based emulsion paint have unique UV resistance property & gives advanced dust resistance property.

Cocoon Pro can be used outdoors on old and new concrete surface . It is particularly suitable for renovating old, already coated surfaces and can also be used on render, masonry work, concrete, weathered fibrated cement, and many other substrates. Its weather protection paint on an acrylate base.

Technical Detail

Finish	-	Soft Sheen
Drying time	-	Surface dry time 30 min
Pot Life	-	36 hrs.

Cocoon Prolast

High quality, elasticised, pure acrylate facade paint. Excellent hiding power, with soft sheen. Water repelling, diffusion open. Comes with carbonation inhibiting property.

Used as a finishing coat on old and new fair-faced concrete, fair-faced concrete repaired with synthetic resin bound and cementitious systems, render and fibrated cement. Also meets requirements of TP/TL OS B for surface protection systems in bridge and structural engineering. Prime with Tobslak Impregnation Primer.

Technical Detail

Finish	-	Soft Sheen
Drying time	-	Surface dry time 30 min
Pot Life	-	36 hrs.



SPREADING

110 – 130 sq.ft/ltr/coat*

- Crack bridging Property
- Elastomeric
- Long lasting protection

- For long life of concrete structures like flyovers, bridges, elevated corridors, interchange, buildings etc.
- For protecting steel inside the concrete
- To stop Alkali Silica Reactivity (ASR)
- For protection along with beautification, due to availability of different shades
- To minimize the maintenance expenditure in future
- To protect the hard work of engineers

Recommended System :

One coat of Tobslak exterior primer coat.
Two coats of Cocoon Pro & Prolast exterior emulsion.

Packing: 1 L, 4 L and 20 L

*Actual coverage may vary from the quoted coverage due to factors such as method and condition of application and surface roughness and porosity.



EXTERIOR RANGE

EXTERIOR TEXTURED FINISHES

Tobslak Rustic

Tobslak Rustic is a copolymer emulsion based special textured decorative paint which gives variety of finishes when applied with different techniques. It can be applied on a wide range of surfaces like sand faced plasters, concrete.

Tobslak Spray

Tobslak Spray is an acrylic copolymer based product, specially formulated to be applied by Spray equipment / Roller to give a textured surface. Tobslak Spray provides the texture coat.

Tobslak Roller

Tobslak Roller has been formulated to provide a fine, uniform texture over interior as well as exterior surfaces of gypsum drywall, plaster, concrete, wood and other materials. Tobslak Roller can be applied from exterior to interior walls and ceilings, beams etc. It is suitable for use over prepared plaster, brick, cement, concrete etc.



Recommended System :

One Coat of Tobslak exterior primer.
One Coat of Tobslak texture.

Recommended Top Coats :

Two coats of Cocoon Exterior Top Coats

SPREADING

Tobslak Spray / Roller-250-300 sqft/bag
Tobslak Rustic - 100 - 110 sqft/bag

Pack size : 30 kgs Bag

*Actual coverage may vary from the quoted coverage due to factors such as method and condition of application and surface roughness and porosity.



PROTECTIVE RANGE

METAL FINISHES

TS Rust-converter

TS Rust-converter is specially designed by using selected chemicals and organic polymers which react with rust (iron oxide) and form a complex product which is stable, bluish black colored layer. It can be used for:

- Vehicles, trailers, fences, iron railings
- Steel metal
- Outside of tanks
- Lawn equipment

All Care Primer

All Care primer is used as an adhesion promoting primer on problematical substrates such as steel, galvanised steel, pure aluminium, copper, brass, wood, old coatings, rigid PVC and many other critical substrates.

Niklas Synthetic Enamel

Niklas Synthetic Enamel paint is a type of oil based paint with superior adhesion qualities. It is available in two types of finishes - glossy and satin and can stick to all primers. It can withstand frequent cleaning without losing its shining. It can be used for new as well as old surfaces and can be done on wood, steel and walls. Niklas Synthetic enamel paint conforming IS:2932. The paint is fairly durable and stain resistant.

TobROP

Tobrop primer is intended for use on interior and exterior ferrous metal and is not usually suitable for galvanized or nonferrous metals like aluminum, copper or brass. Ferrous refers to metals that contain iron. If you're uncertain whether your metal is ferrous or nonferrous, use a magnet to test it. Ferrous metals are magnetic, and nonferrous metals are not. It is also not suitable for use on asphalt or bituminous surfaces. Tobrop primer is an anti-corrosion coating designed to stop rust formation. It can be applied directly over a rusty surface and is most ideal for exterior use. Red oxide primer can be covered with Niklas Synthetic Enamel as topcoats once it fully dries.



Advantages of Niklas Synthetic Enamel Paint

- Available in container, ready to use.
- Tough durable and stain resistant and can withstand frequent cleaning without losing brightness.
- Washable and washing capability is more than that of plastic paint.
- Flows well and provides a durable finish that lasts for years.
- Used for both interior and exterior applications.
- Provides smoothness and brightness to the surface. Glossy finishes are generally used in bathroom, kitchens and for painting dado in hospitals, schools, stairs hall in public buildings etc.

Packing: 1 L, 4 L & 20 L



PROTECTIVE RANGE

METAL & FLOOR FINISHES



Zifo Primer

Zifo Primer is a high performance, modified alkyd metal primer. It has very good anti-corrosive properties. Zifo Primer is used as an anti-corrosive primer on iron and steel. Ideal when wood and metal are combined in the same structure as it will prime both surfaces. Can be used for fire escapes, metal gates, metal garage doors. Can be used on aluminium.

FINISH Semi-matt	COLOUR Red, Grey	TYPICAL SPECIFIC GRAVITY 1.32 @ 20°C
EXPECTED SPREADING RATE 13 sq.m / litre @ 35 microns D.F.T		TYPICAL VISCOSITY 3.5 sq.m / litre Poise @ 25°C

The practical spreading rate may be lower as this depends on factors such as the porosity and roughness of the surface to be painted and material losses during application.

Packing: 1 L, 4 L & 20 L

Tob Pucarb

Tob Pucarb is tough, highly flexible, corrosion resistance and provides heavy duty long-term protection for equipment's exposed to aggressive chemical, industrial and marine environments. It has high tensile strength and elongation, excellent impact and abrasion resistance, which are vital features for surface coating applications.

Packing: 1 Ltr, 4Ltr & 20 Ltr

Epoxy TS 200

Epoxy TS 200 New is used as a primer or adhesion promoter in the TOBSLAK Water Vapour Diffusion-Open System:

Application examples:

- Warehouses
- Garages
- Parking garages

Packing: Tin container 1 kg, 5 kg, 10 kg; 25 kg on request

Epoxy TS 300 SG

Epoxy TS 300 SG is used as a sealant in the Tobslak water vapour diffusion open system.

Application examples:

- Production rooms
- Warehouses
- Workshops

Packing: Tin container 1 kg, 5 kg, 10 kg; 25 kg on request

Tob Pucarb : Excellent weathering and gloss retention properties.

- No chalking for many years. Retains its original color & gloss.
- Suitable for all kinds of substrates including Metals and Non-Metals.
- Excellent corrosion resistance to many media.
- Excellent adhesion & bonding.
- Excellent resistance to abrasion & cracking.
- Excellent tensile strength, peel strength and impact strength
- Easy to apply and fast curing
- Highly impervious to water and chemical seepage.
- Elastic coatings, retains firmly under expansion and contraction of substrate.
- Highly resistance to Acids, Alkalies, Salt Spray, Halogens, Solvents, Lubrications etc.
- Has a good dielectric property.



**WATERPROOFING
SYSTEM CELLAR TO ROOF**

WATERPROOFING RANGE

INTERIOR & EXTERIOR WATERPROOFING



Tbyrofest

Deep protection silicification for waterproofing and refurbishing old and new buildings in the Tbyrofest System according to WTA Code of Practice 4-4-04/D Injecting Masonry Work against Capillary Moisture Numerous expert opinions, test certificates, factory production controls and external supervision. Proved in practice for more than 20 years.

Packaging: Canisters: 1 kg, 5 kg, 10 kg and 30 kg

Tobust Grout

High quality, waterproofing grout with high resistance to sulphate for waterproofing buildings in the Tbyrofest System.

- For subsequent waterproofing of basements against ground damp, non-standing and standing seepage water, water pressure and water from behind
- Especially for damp areas on plinths and basement walls with large surface moisture penetration.
- For vertical waterproofing in areas where subsequent horizontal barriers are placed.
- For waterproofing new buildings (basements) and building elements against moisture as well as rising damp in the positioning areas of walls with good adhesive shear strength.

Packaging: 25 kg paper bags

Tob Bituthane

Tob Bituthane is high performance water based cold applied elastomeric coating. This unique single component system is ready to use material based on PU modified bitumen emulsion. It can be used for water proofing of roof, balconies, terraces, parking area, water reservoir. Suggested Primer, Tob Seal as per recommended dosage.

Packaging: 25 Kg

Tbyrothane 1 K

Tbyrothane 1K is polyurethane based liquid membrane is a single component liquid applied membrane made of polyurethane specially formulated to waterproof raft, retaining wall, rooftops, balconies with outstanding performances allow protection and waterproofing of areas. For best performance coating should be covered with covering plaster or tiles.

Tbyrothane primer recommended as base coat.

Packaging: 25 Kg

FOR MORE DETAIL REFER
TECHNICAL DATA SHEET



WOOD PROTECTION RANGE

INTERIOR & EXTERIOR FINISHES



Tob 100 Stain

Tob 100 Stain is used for coating cladding, fences, gates, pergolas, garden pavilions, roof eaves, gables, facades, etc. This stain preservative is used to protect timber without ground contact in outdoor areas corresponding to service classes 2 and 3 in accordance with EN 335-1 or DIN 68800-1 against soft rot and blue stain. It also protects the wood from wetness and sun. The stain does not flake or peel.

Tob 100 Stain

A decorative, liquid wood preservative stain for use in outdoors and inside.

- Protects from UV rays.
- Protects from termites & insects.
- Protects against blue stain.
- Easy to apply.
- Moisture resistant.
- Safeguards from fungus and algae.
- Does not flake or peel.

Packing: 0.75 L, 2.5 L, 5 L and 20 L tin containers

Tob 200 Stain

Tob 200 Stain is used to protect wood without ground contact in outdoor areas against blue stain. It can be used to treat facade facing, roof overhangs, shutters and balcony boards, high quality fences, pergolas, arbours and carports, screen fences, etc.

Tob 200 Stain

Pigmented, decorative wood preservative in cream form

- Moisture resistant
- Protects from Blue stain and algae
- No dripping
- Penetrates deeply into the wood
- Gives extra protection against water
- UV resistant
- Does not tear or peel
- Spreads by itself without leaving marks
- Optimal flow properties for greater coverage

Packing: 0.75 L, 2.5 L and 5 L tin cans

USP of System

- Best protection for all kinds of wooden surfaces.
- German based impregnation patented technology.
- Provides a polished look.
- Protects from weathering and damage by the insects.
- So easy to use that one can do it yourself.
- Comes in ready-made shades and is ready to use.
- Low-cost & long-lasting protection.



WOOD PROTECTION RANGE

INTERIOR & EXTERIOR FINISHES



Tob-300 Stain

Tob-300 Stain UV is used for decorative treatment of soft and hardwood, e.g. wood siding, wood facing, wood panels, garden furniture, windows, doors, etc.

It is solvent based, medium solid stain with very good UV protection for wood in outdoor areas. It carries below features.

- Ideal for colored and decorative treatment of wood.
- Has good resistance to weather
- Easy to maintain
- Excellent working and flow properties
- Easy to apply
- Has a silk gloss finish.
- Water and soil repelling
- High UV protection
- Does not peel

Packing: 0.75 L, 2.5 L, 4 L and 20 L tin containers

Tob Aqua 1K PU

Single component, glossy, clear fixation layer and sealant for indoor /outdoor areas.

- Water based
- Fast drying
- Non-yellowing and transparent.
- Ready to use
- Easy to apply
- Odourless

Packing: 0.75 L, 2.5 L, 4 L and 20 L tin containers

Tob Parquet Laquer

Abrasion and scratch resistant varnish for parquet and wood floors in interior areas and decorative furniture coatings. A sealing varnish which can be applied by rolling, brushing or spraying.

- PVC resistant
- Easy to apply
- Has low odour
- Fast drying

Packing: 0.75 L, 2.5 L, 4 L and 20 L tin containers

How to Polish Yourself

Step 1

- If the surface is already painted or polished, remove with the help of paint remover or sand paper till the actual wood comes in a condition to absorb the TOBSLAK ready made polish
- If any filling is required for smoothening the surface, it should be done with wood fillers.
- If required, first sand the surface with 80 no., and thereafter with 120 no., 400 no. waterproof and lastly with 600 no. water proof sandpaper till the surface is smooth enough.
- All sanding to be done in the direction of the grains of the wood.

Step 2

- » **First Coat:** Apply one coat of Tob-100 stain with a soft cloth or brush on the well prepared surface, in the direction of the grains of the wood.
- Let it dry for at least 12 hours.
- Use 1000 no. waterproof sandpaper to remove the dust particles which would have come on the surface. All sanding should be done in the direction of the grains.

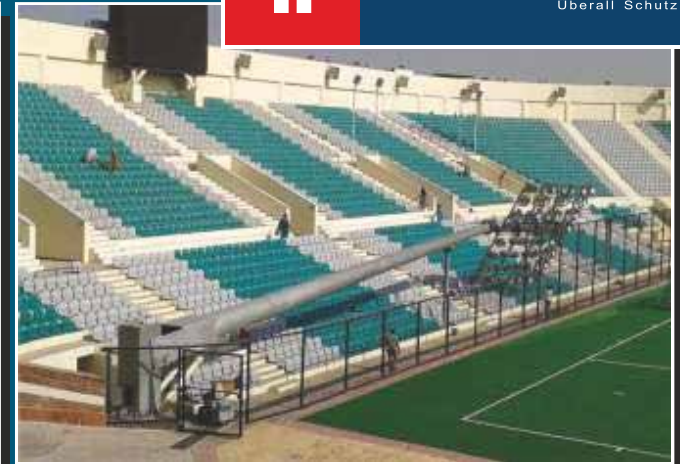
Step 3

- » **Second Coat:** Apply a thin second coat of Tob-100 Stain or Tob-200 Stain with a soft cloth or brush.
- A Let it dry for at least 12 hours.
- Again use 1000 no. waterproof sandpaper to simply remove the dust particles.

Step 4

- » **Third Coat :** Apply one or two very thin coats of Tob-300 Stain.







Tobslak International

Fra01, Eschersheimer Landstraße 42, 60322, Frankfurt am Main, Hessen, Germany
Phone: +49 3221 1226423 | info@tobslak.com • www.tobslak.com



Social Media

