

## OESO Newsletter – June 2023

Message to the members of OESO,  
and to all those who have interest in Esophagology



### The **OESO-SEMPIRE** **VIRTUAL EDUCATIONAL CHANNEL** 28<sup>th</sup> meeting

From the University of Chile, Department of Surgery,  
Hospital Dr José Joaquín Aguirre  
Hosted by Prof. Italo **Braghetto**  
(Pilot Center of Chile)

### Thursday, June 1, 2023

- **Santiago, Chile** | South America time: 3 – 5 pm
- **Europe CET:**  
Paris: 9 – 11 pm  
UK: 8 – 10 pm
- **North America:**  
West Coast: 12 noon – 2 pm  
East Coast: 3 – 5 pm
- **South America:**  
São Paulo: 4 – 6 pm  
Buenos Aires: 4 – 6 pm
- **Africa:**  
Bomet, Kenya,  
10 pm – 12 midnight
- **Asia:** Malaysia,  
Kuala Lumpur:  
3 – 5 am (June 2)  
Beijing: 3 – 5 am (June 2)
- **Australia:**  
Melbourne: 5 – 7 am  
(June 2)

- Zoom technology applied

Registration is free, but mandatory:

Free registration



## Complicated Barrett's esophagus associated with Systemic scleroderma

### Introduction

- Systemic sclerosis (SSc) is a rare auto-immune disease
- Fibrosis of small arteries, abnormal collagen in the skin, lungs, and gastrointestinal tract
- Esophagus is frequently involved (up to 80% may suffer from GERD).
- Etiology of GERD in these patients is multifactorial: combination of impaired saliva production, aperistaltic esophagus, incompetent LES, gastroparesis.

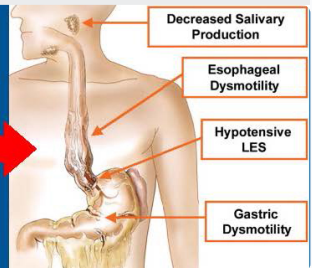
Complications related to long-standing GERD include esophagitis, long-segment strictures, Barrett's esophagus, and recurrent aspiration pneumonitis.

### GIST OF THE 1<sup>ST</sup> CASE

**Presenter:**  
Enrique Lanzarini (Chile)

- PV, Female, 50 years old
- Chronic heartburn (daily presentation) (10 years)
- Retro-sternal pain
- Dysphagia
- PPIs treatment for many years
- Systemic scleroderma

Systemic scleroderma



## Endoscopy

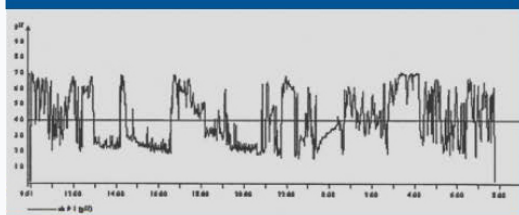
Barrett's esophagus with esophagitis, ulcer, stricture and hiatal hernia





## 24 hr pH Monitoring

- %time pH less than 4 = 23.4%
- DeMeester score = 86.4
- Number of episodes of reflux = 273
- Conclusion = Severe pathologic acid reflux



## Manometry

LES

Location= 37-39cm from incisors

EGJ type III = hiatal hernia

LES pressure = 8.3mmHg

Complete relaxation

Esophageal body

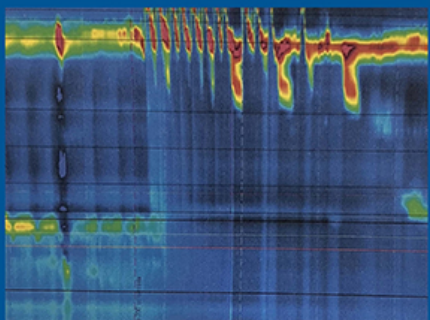
Severe defect of peristaltic waves

Conclusion:

Ineffective esophageal motility

Hypotensive LES

Hiatal hernia



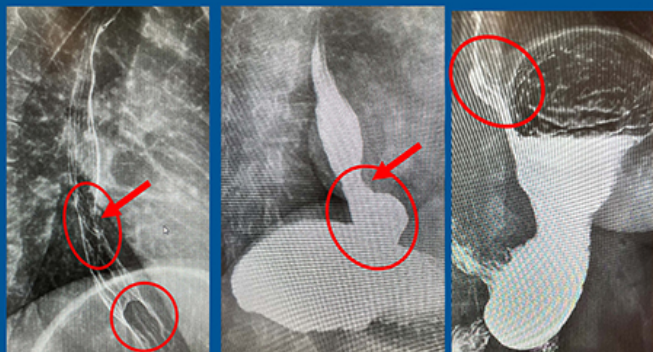
## Radiology (Barium swallow)

Mild stricture (arrow)

Ulcer

Cardia dilatation

Sliding hiatal hernia



Topics for discussion:

- Definitive Diagnosis?
- Treatment:
  - Conservative? PPIs
  - Dilatation?
  - Surgery?
    - Nissen? Dor? Toupet? Other?
  - PRO and CON

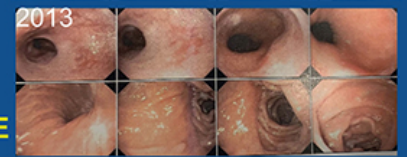
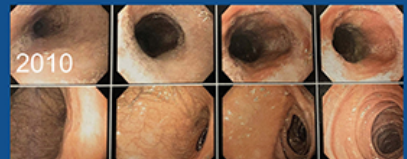
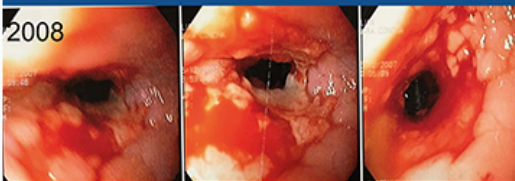
## GIST OF THE 2<sup>ND</sup> CASE

**Presenter:**  
Enrique Lanzarini (Chile)

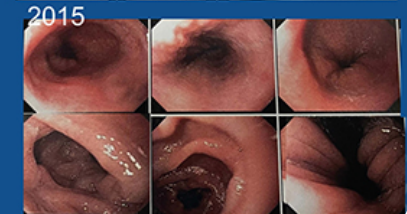
- L J, female, 41 years
- Systemic scleroderma with complicated Barrett's esophagus with stricture and ulcer
- Operated 15 years ago  
Distal Gastrectomy Roux-en-Y gastro-jejunostomy

## Endoscopic findings and follow-up

### PREOPERATIVE



### POSTOPERATIVE Follow-up



### Topics for discussion:

- Distal gastrectomy + Roux–en-Y gastro-jejunostomy
- Alone?
  - Combined with Dor? Toupet?
  - Total esophagectomy?
  - Results?

### Conclusion:

- Multidisciplinary evaluation is mandatory
- Complete study of esophageal function and anatomy
- Combined treatment/dilatation + surgery
- Best surgery?

Treatment of recalcitrant GERD in SSc patients is challenging. Minimally invasive RYGB appears feasible and safe with promising preliminary short-term results. Esophagectomy should be reserved to selected patients. Current evidence is scarce while definitive indication about the most appropriate surgical treatment is lacking.

#### Panel for discussion:

- Italo **Braghetto**, Moderator (Chile)
- Enrique **Lanzarini**, Presenter (Chile)
- Claudia **DeFilippi** (Chile)
- George **Triadafilopoulos** (USA)
- Gustavo **Andrade de Paulo** (Brazil)
- Luis **Durand** (Argentina)
- Edgar **Figueredo** (USA)



*Twenty-five Pilot Centers worldwide are currently listed in the network of the OESO-SEMPIRE Platform of Excellence in Esophagology to take part in the program of the **OESO Virtual Educational Channel in Esophagology**. Such a program is in line with true multi-disciplinarity, the essence of OESO since its creation, and the mission defined by UNESCO in the **Chair of Digital Education** attributed in 2018, at the University of Geneva, to the OESO Foundation*



The previous "Staff meeting discussions" were organized in

- **2020:** May 28 (Pilot Center of Milan), July 22 (Pilot Center of Stanford), October 3 (Pilot Center of Bomet, Kenya), October 29 (Pilot Center of Beijing), December 10 (Pilot Center of Geneva),
- **2021:** January 29 (Pilot Center of Melbourne), February 25 (Pilot Center of Bordeaux), March 19 (Pilot Center of Stanford), April 15 (Pilot Center of Paris), May 26 (Pilot Center of Milan), June 23 (Pilot Center of Sao Paulo), August 21 (Asian Pacific Digestive Week), October 19 (Pilot Center of Mainz), November 22 (Pilot Center of Bordeaux), December 9 (Pilot Center of Geneva),
- **2022:** January 20 (Pilot Center of Kota Bharu), February 22 (Pilot Centers of Beijing, Shanghai and Guangzhou), March 24 (Pilot Center of Boston), May 4 (Pilot Centers of Melbourne and Kenya), July 19 (Pilot Center of Kota Bharu), September 23 (Pilot Center of Milwaukee, Wisconsin), October 8 (Pilot Center of Chile), December 14 (Pilot Center of Geneva),
- **2023:** January 11 (Pilot Center of Stanford), February 26 (Pilot Center of Malaysia), March 23 (Pilot Center of Boston) and May 24 (Pilot Center of Paris).



- ***Wherever you are in the world,***
- ***Whatever your specialty,***
- ***Whatever your level,***

the 28th clinical case of the OESO-SEMPIRE Platform will afford you the opportunity to participate in a global multidisciplinary staff meeting dedicated to two challenging topics of esophagology. It will involve specialists in various disciplines, and participants from any country can connect to the discussions.

Looking forward to seeing you soon!

**Robert Giuli, MD, FACS**  
Professor of Surgery  
Founder & Deputy Executive Director of OESO

The next 29th Clinical case coming up for discussion will be presented in September 2023.

*Details and time will be announced on the OESO website and in the next Newsletter.*

OESO Head Office  
2, Bd Pershing  
75017 Paris, France  
Tel. + 33 (0)1 55 37 90 15  
email: [michele.liegeon@oeso.org](mailto:michele.liegeon@oeso.org)  
[www.oeso.org](http://www.oeso.org)

