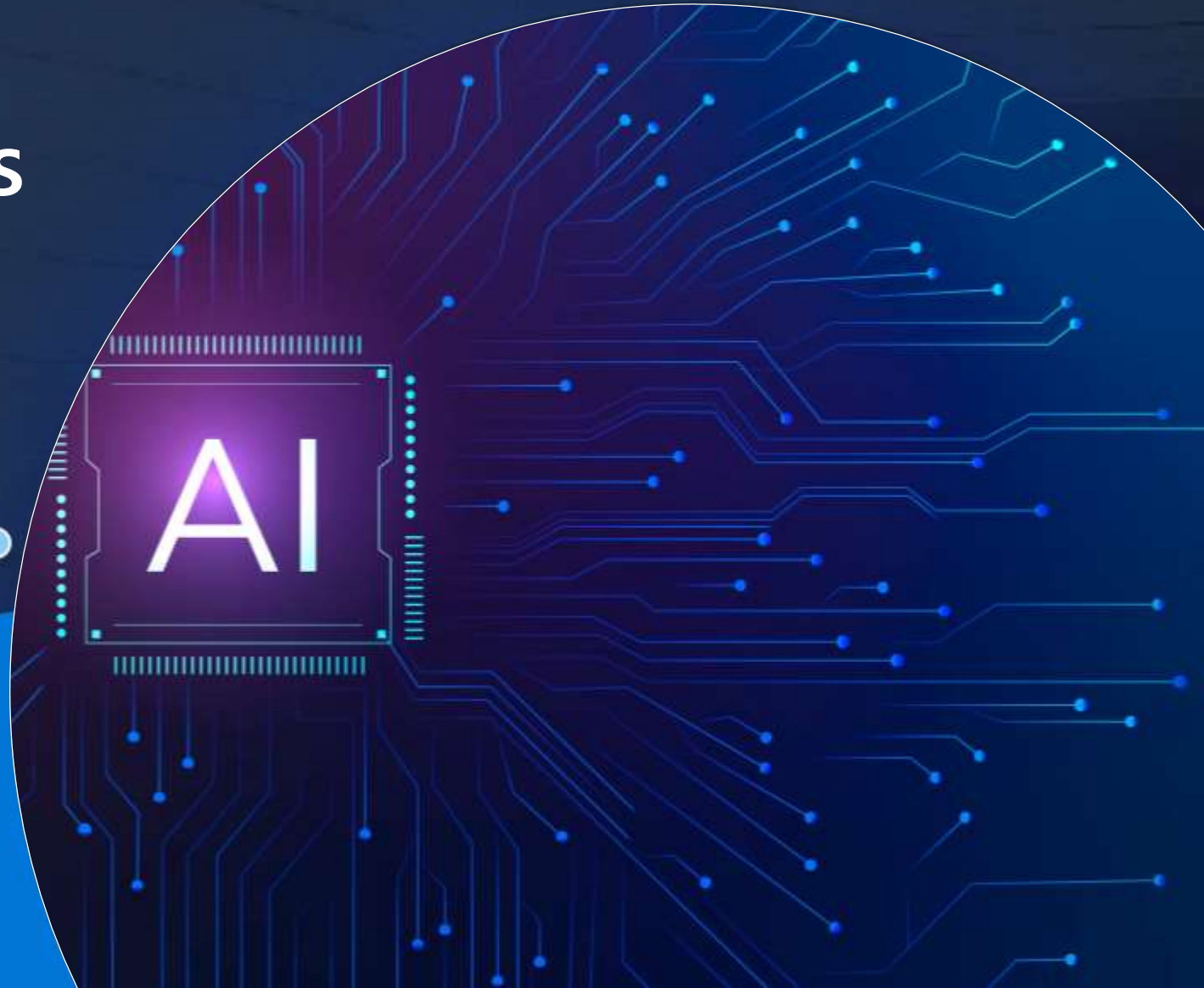


Customs Professionals empowered by Generative AI

Valentina Ion Global Lead
Customs and Transportation
World Wide Public Sector



AI Trends in Customs Operations



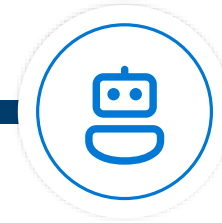
New ways of engaging with employees and people



Democratization of AI with Generative AI, Explainable AI, Sustainable AI



Leverage AI driven data Insights in the Cloud



Smart Innovation and Automation for real time cross-country and cross agency insights



Optimize employee time and skills



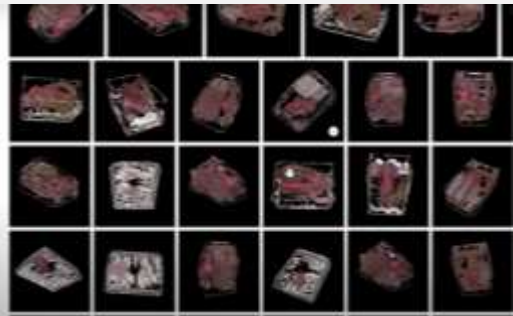
Essential part of Process Improvement and Business Decision Making

Security & Trust

AI-led innovation in Customs and Ports Operations



UK Customs and Heathrow Airport



Multispecies AI model to detect illegal wildlife trafficking

[Project SEEKER](#)



Canada Marine Security Operations Center



Enhancing situational awareness with Correlation engine powered by AI

Object Detection | Action Recognition
Image Classification | Semantic Segmentation



Ports of Oulu, Belgium



Intelligent customs and ports operations with Digital Twin

5G Connection | IoT and spatial data
Intelligent data platform | Real time 3D



Inter-American Center of Tax Administrations (CIAT)



Unlocking insight and empowering tax agencies to spot illicit economic activity by embracing explainable AI

Machine Learning | Anomaly detection
Network analysis | Intelligent Dashboards

We help you fast-track AI adoption



Open-Source
Intelligence
(OSINT)



Multi Intelligence
Discovery
(MINTED)



Azure Generative
AI (Information
Assistant)



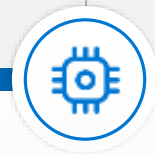
Public Finance
Anomaly Detection



Hybrid Cloud



Cyber Security



Unstructured Data Discovery,
Triage, Enrichments & Analysis



Structured Data
Processing & Analysis



Hybrid and Multi
Cloud Management



National Security
Operations Centers
(NSOCs)



Azure OpenAI Service: Information Assistant

Create an “assistant” that will enable users to “*Have a conversation with their private/domain specific data*” by leveraging the power of a large language model



Current – Responses can be based on the latest “up to date” information



Relevant – The responses must leverage their own *private/domain specific* data



Controlled – Provide the ability to adjust the response from precise to creative



Referenced – Respond using references/citations



Personalized – Respond with your role/persona in mind



Explainable – Providing details on the “thought process” that was used

The importance of Responsible AI

It ensures:

- The highest standards of legality, ethics, transparency and accountability are met;
- That evidential/admissibility and data quality requirements are fulfilled;
- Public trust and confidence in the use of AI by the public sector is maintained;
- The data collected, transmitted, processed, and stored is secure; and
- Personal privacy and civil liberties are maintained





Valentina Ion

vaion@microsoft.com

