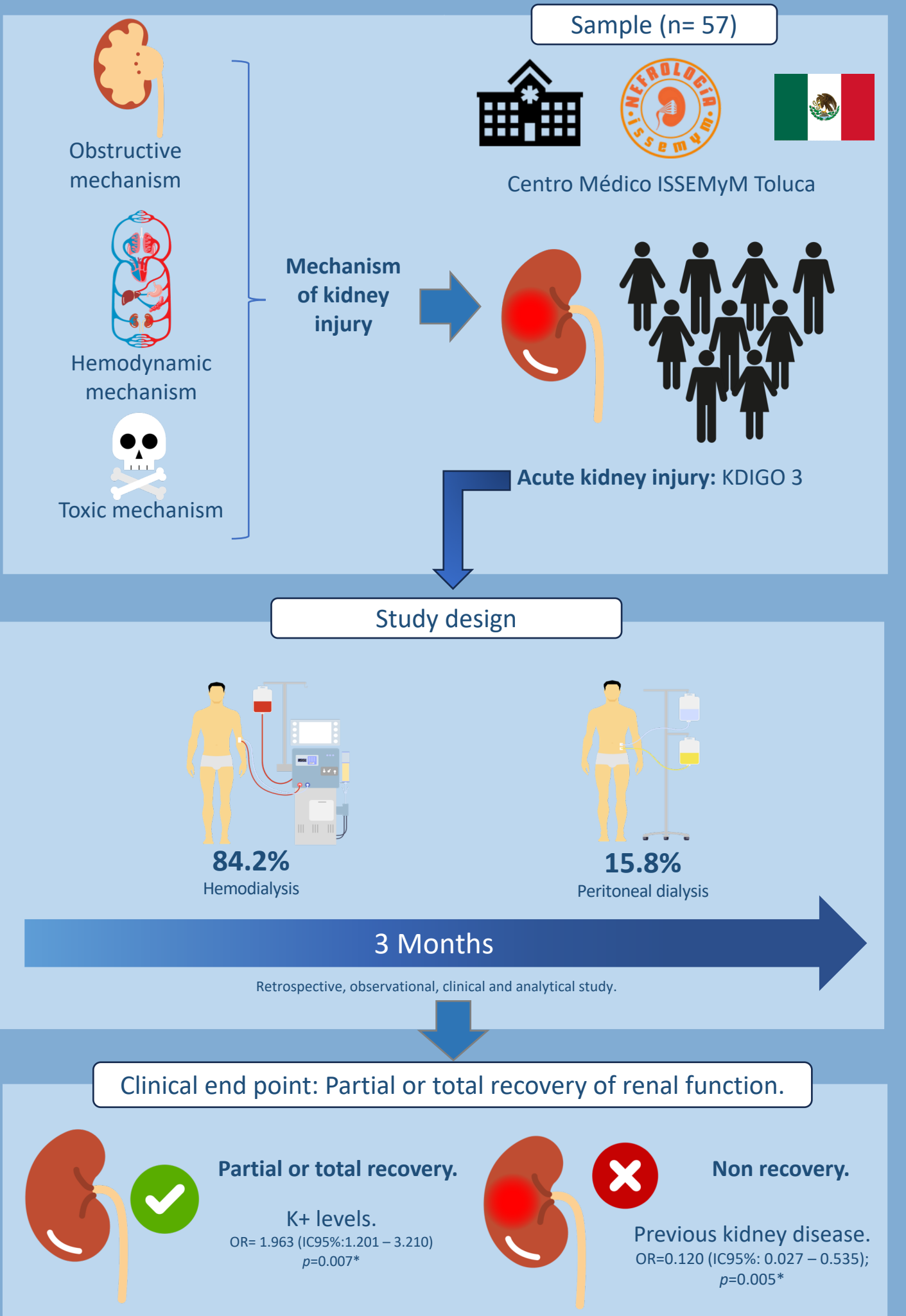


Factors associated with partial or total recovery of renal function in patients with AKI KDIGO 3 at the ISSEMyM Medical Center who required replacement therapy.
Carmona-Bautista CA, Ruíz Mejía R, Rodríguez Chagolla JM.



Chronic kidney disease is a factor against the recovery kidney function.
Hyperkalemia is a protective factor for recovery kidney function.