



# AEO in Smart Customs: Leveraging Technology for Risk Mgmt and Trade Facilitation

*An Indian Experience*

R. Ananth  
Director (Customs),  
Central Board of Indirect Taxes and Customs, India

# Overview of Indian AEO programme



▶ Voluntary trade facilitation programme of Indian Customs, with the aim to enhance international supply chain security and facilitate movement of legitimate goods.

▶ Varies across - AEO Tier I, II, and III for importers/ exporters based on the benefits extended.

▶ Has a separate tier - AEO LO for all other supply chain participants

▶ Augmentation of the AEO and MRA programme is part of National Trade Facilitation Action Plan (NTFAP)

Category	Numbers (as on 01.04.2024)
AEO T1	3607
AEO T2	1073
AEO T3	139
AEO LO	843
<b>Total</b>	<b>5662</b>

# Benefits associated with AEO T1/ T2/ T3 Programme



Benefits	Tier - T1	Tier - T2	Tier - T3
High facilitation	Y	Y	Y
Direct Port Delivery/Direct Port Entry	Y	Y	Y
BG 50% (25% in case of MSME)	Y	25%/ 10%	No Bank Guarantee
Expedited investigation-dispute resolution	Y	Y	Y
On request 24 x 7 at all sea-ports and airports	Y	Y	Y
OSPCA once in 2 years	Y	3 years	OSPCA on request
E mail on arrival/departure	Y	Y	Y
Deferred duty payment	N	Y	Y
MRA benefits in other countries	N	Y	Y
Waiver of seal verification	N	Y	Y
Refund/ Rebate and Faster drawback	N	45 days	30 days

# Benefits of AEO LO Programme



## AEO LO programme

Granted to categories of economic operators other than importers and exporters, namely Logistics Providers, Custodians or Terminal Operators, Customs Brokers and Warehouse Operators.

S. No.	Type of Entity	Benefits extended
1	Logistics service providers	(a) Waiver of bank Guarantee in case of trans-shipment of goods (b) Facility of Execution of running bond (c) Exemption from permission on case-to-case basis in case of transit of goods.
2	Custodians or Terminal Operators	(a) Waiver of bank Guarantee under Handling of cargo in Customs Area Regulations 2009 (b) Extension of approval for custodians under regulation 10 (2) of the 'Handling of cargo in Customs Area Regulation 2009' for period of 10 years
3	Custom Brokers	(a) Waiver of Bank Guarantee to be furnished (b) Extended validity (till validity of AEO status) of licenses granted. System Manager to incorporate date of validity of AEO from time to time in the System Directory (c) Waiver from fee for renewal of license
4	Warehouse Operators	(a) Faster approval for new warehouses within 7 days of submission of complete documents (b) Waiver of antecedent verification envisaged for grant of license for warehouse (c) Waiver of solvency certificate requirement (d) Waiver of security for obtaining extension in warehousing period



# Risk Management 2.0 : KEY DATA SCIENCE MODELS



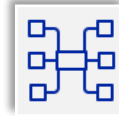
## Exporter Spurt Model

Identify Risky exporters claiming undue export incentives



## Network Analysis Model for automated detection of Risk supply chain networks

Model using Network analytics metrics for Risk scoring supply chain



## Mirror analysis of mapping of domestic supply chain data with International supply chain

Model to identify HSN Mismatch across supply chains



## Input Output HSN Correlation model

Model to find the correlated inputs HSN through Network Analytics



## Valuation Trend Analysis ML Model

Valuation Trend and Outlier analysis using Isolation Forest algorithm



## 360° Risk Profiling and Post Seizure Analysis Tool

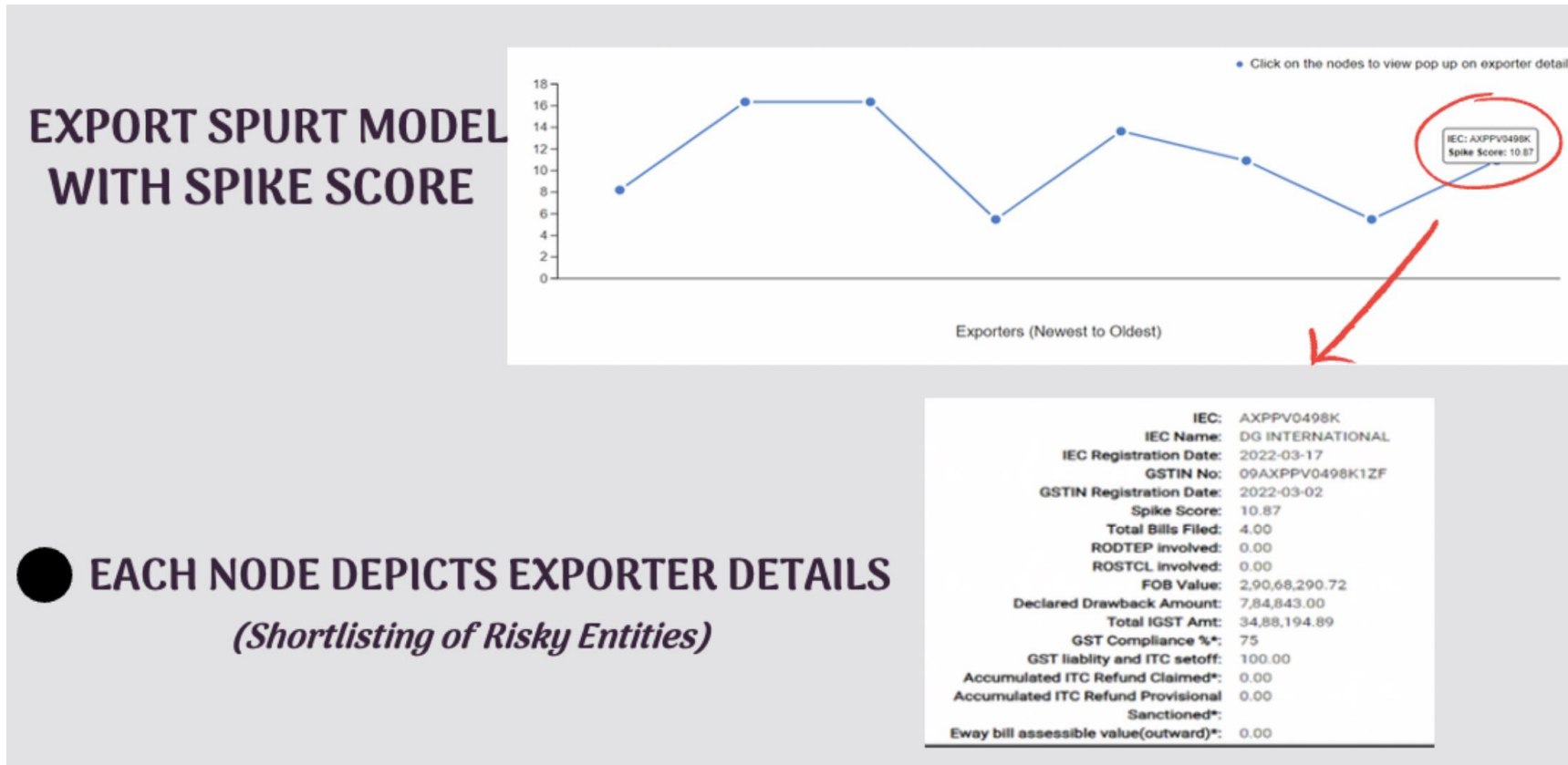
Dashboard to profile a consignment in 360 °



# 1. BEHAVIOURAL RISK IDENTIFICATION MODEL

## Early warning of Risky Trade behavior dynamics

*Case of Export Spurting of risky entities*

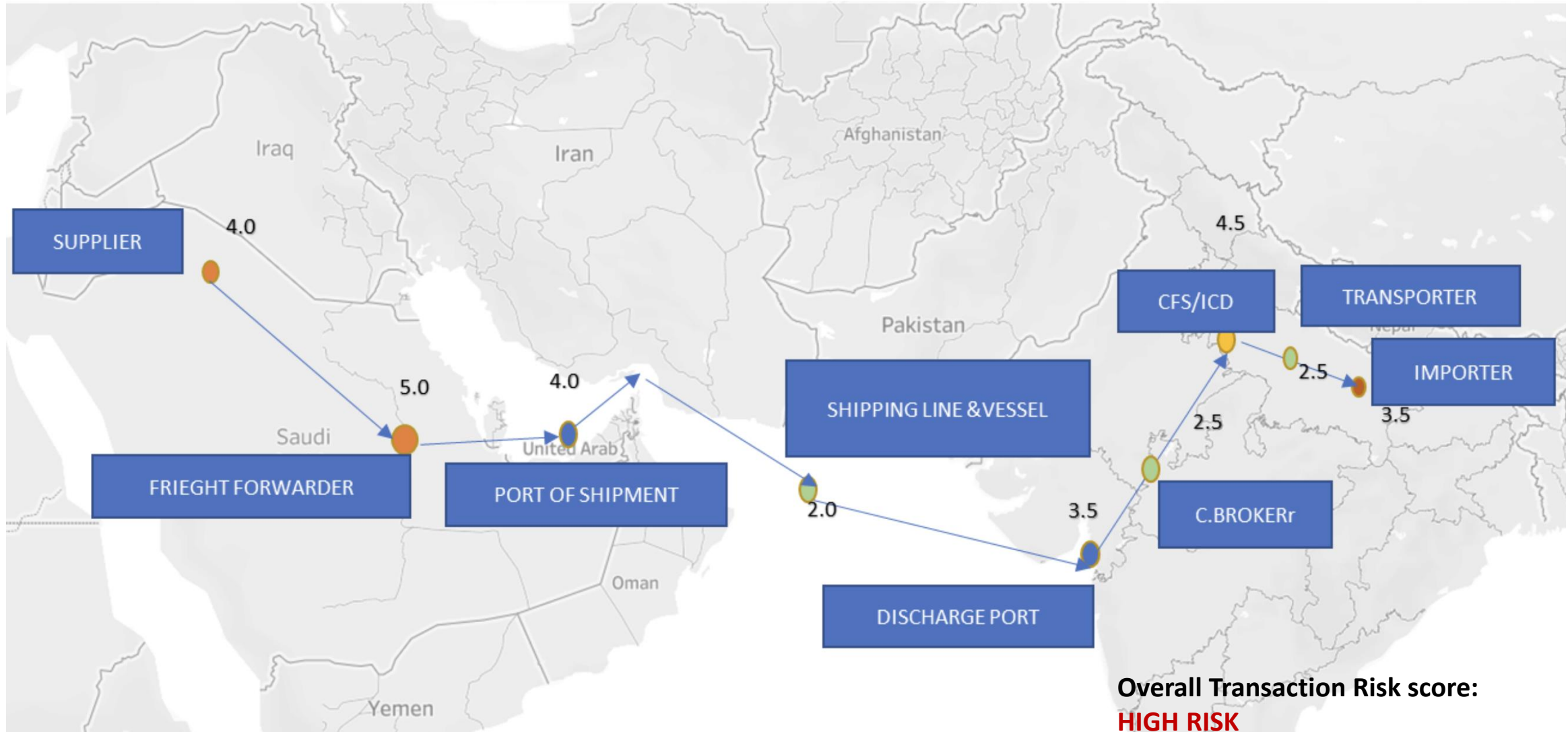


*Reason identified : Undervalued multiple exports for money laundering and monetary incentives*



## 2. ENTITY PROFILING ALONG SUPPLY CHAIN

### Risk grading and segmentation of Supply chain entities



## 2.NETWORK ANALYTICS AMONG BUSINESS ENTITES

### Shell/Risky entities identification in supply chain



Identification of risky relationships and interactions among entities in

(i) Customs declaration

(ii) e- Commerce shipments

(iii) Supply chain and

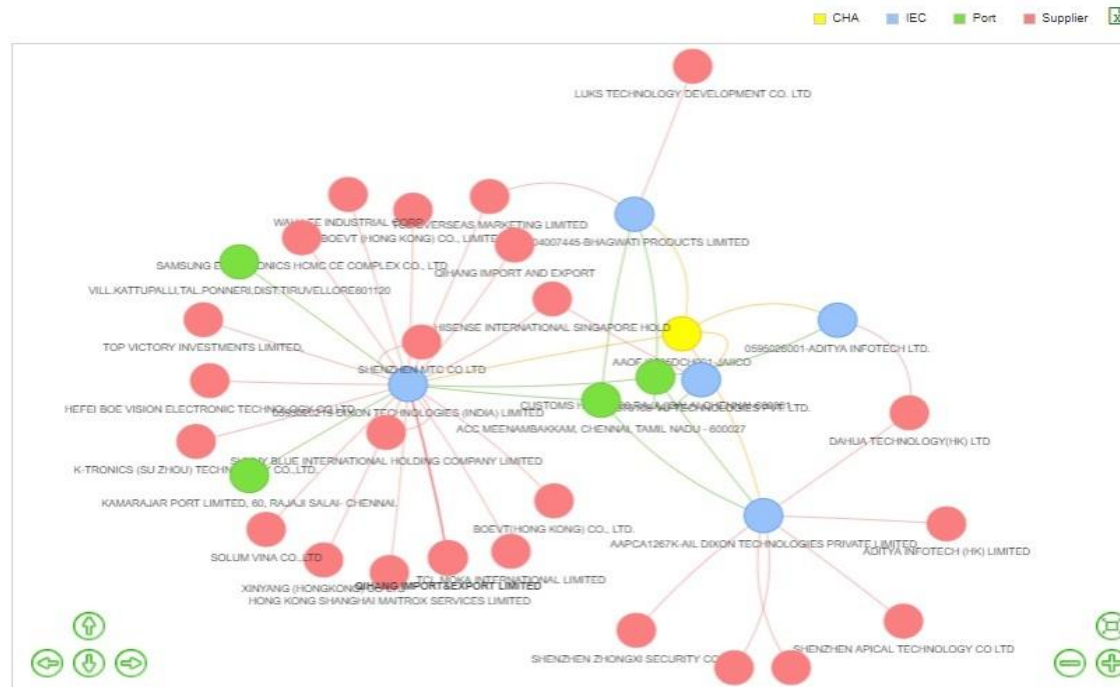
(iv) Passenger manifests

IEC-CHA Network

Selected Filters :-

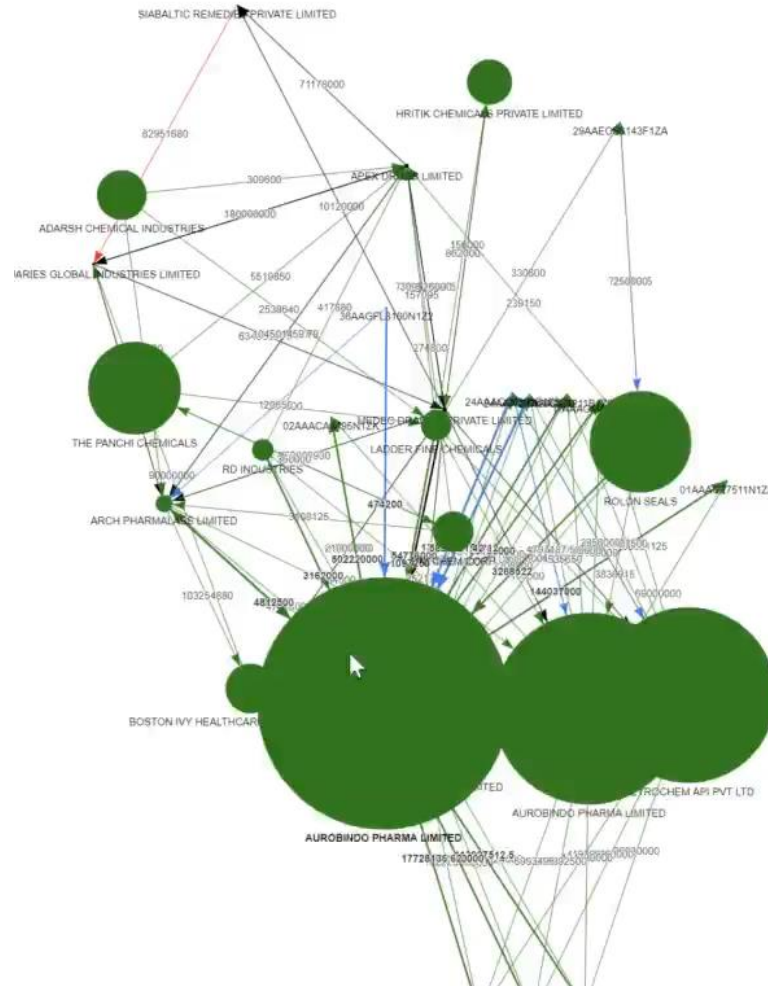
Year : 2021 - 2022  
CHA : AAOFJ5505DCH001-JAIICO  
Import/Export : IMPORTS  
Port : All  
CTH Code : 85299090  
Aggregated Value Range : >= 1Cr

Note: Displaying top 10 IEC's for each CHA and showing maximum top 50 suppliers and ports





### 3. Domestic E-way Bill Network analytics – Risky Supply chain identification



creation: ■

repulsion:

centralGravity:	<input type="range" value="0.2"/>	0.2
springLength:	<input type="range" value="300"/>	300
springConstant:	<input type="range" value="0.05"/>	0.05
nodeDistance:	<input type="range" value="200"/>	200
damping:	<input type="range" value="0.09"/>	0.09
maxVelocity:	<input type="range" value="50"/>	50
minVelocity:	<input type="range" value="0.75"/>	0.75
solver:	<input type="text" value="repulsion"/>	
timeStep:	<input type="range" value="0.53"/>	0.53

generate options



## 4. USE OF LARGE LANGUAGE MODELS AND GENERATIVE AI

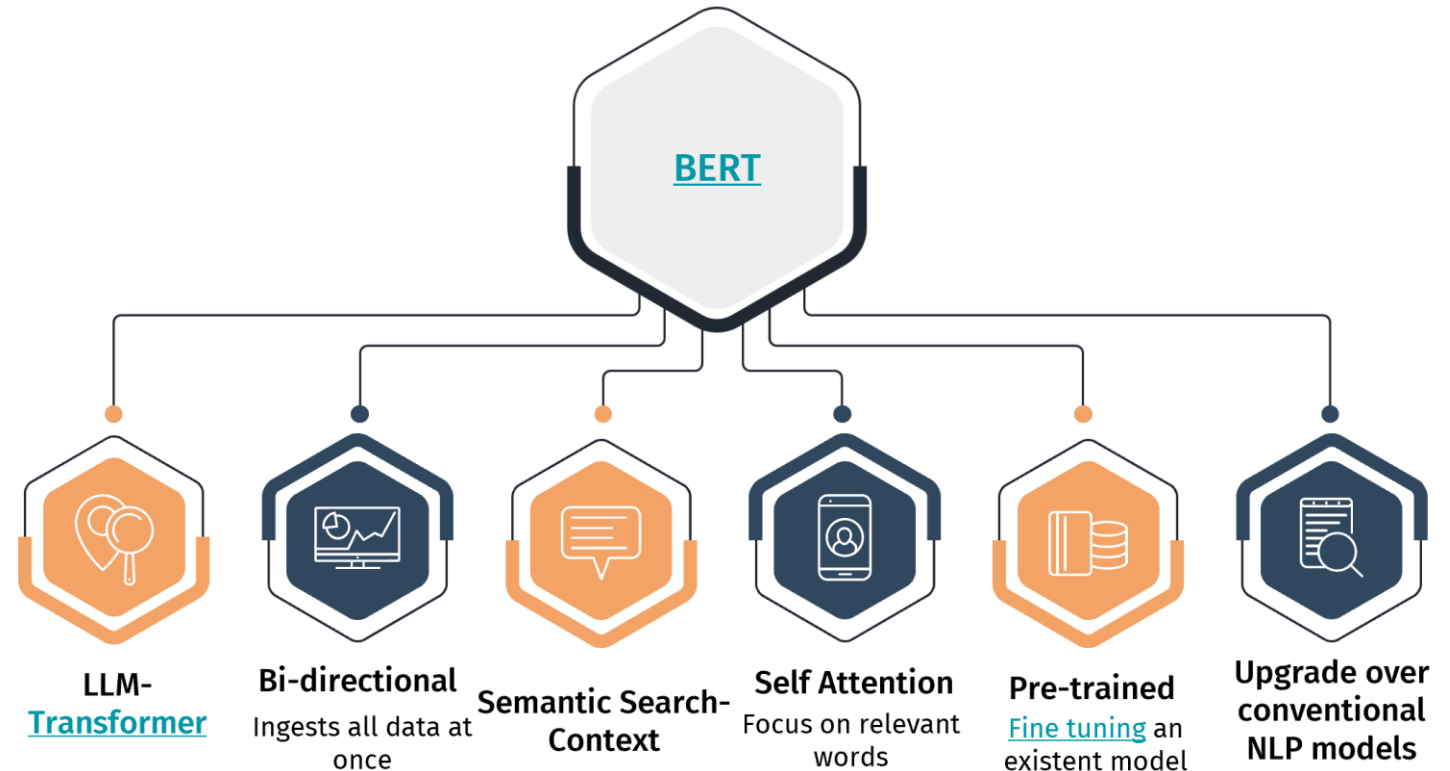
### ( I ) AI assisted Realtime Misclassification identification engine

#### Bidirectional Encoder Representation from Transformers

ADVAIT-BERT – AI based misclassification identification engine of Indian customs based on latest AI technology – Large language model BERT.

Finetuned to identify potential misdeclaration on real-time customs declarations

Used in real-time data analytics and risk discovery of unknown risks by NCTC -Risk management organisation



# AUTOMATED ML INSTRUCTIONS OF RMS



Automated Identification of Risks of

- (i) Valuation
- (ii) Misclassification
- (iii) Wrong availment of BCD, IGST, CVD Notification
- (iv) FTA and COO certificate



Developed and Integrated  
Machine Learning based Solution  
in NCTC system



Automated generation and sending  
of ML based Instructions to  
Assessment Officer



Systemic monitoring of action  
taken by Assessment officer on the  
ML based instructions and  
reinforcement based learning

NATIONAL CUSTOMS TARGETTING CENTER



# MACHINE LEARNING IN NII AUTONOMOUS RISK DETECTION

## Autonomous Risk detection

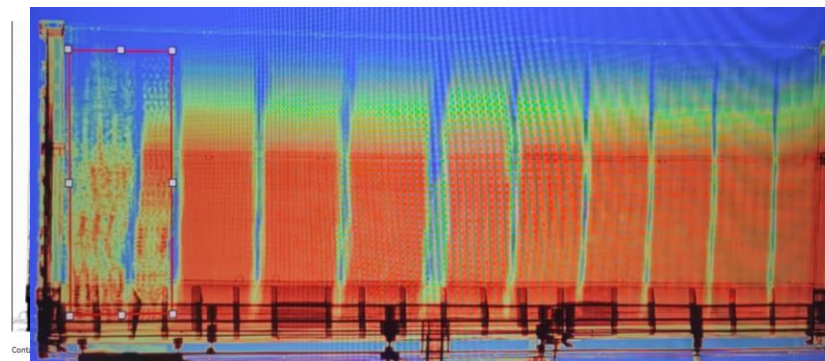
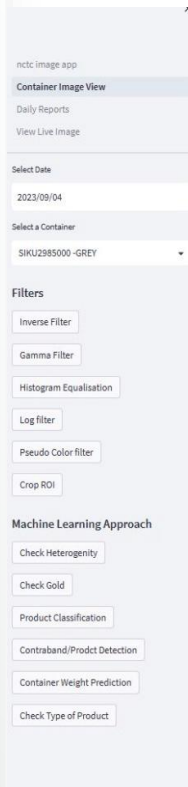
Harnessing the power of Machine learning , Computer vision and Image analytics on Country specific contrabands/ products

## NCTC Comprehensive Image analytics solution

Encompassing Object Detection using Cutting edge algos like YOLO , Product Identification and classification ML Algorithms with promising results

## Centralised and Vendor agnostic approach

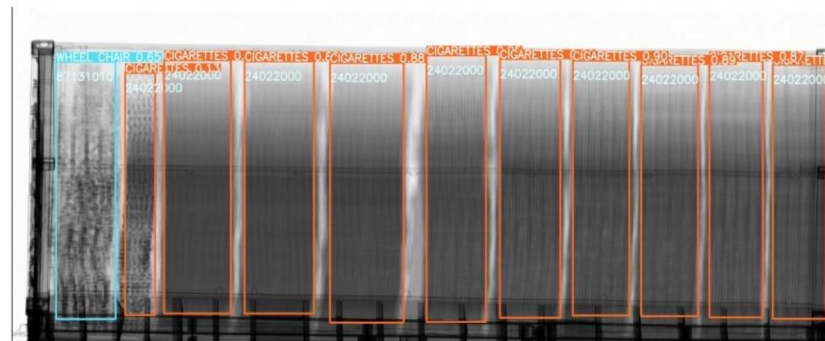
Vendor agnostic , Customized and inhouse solution by NCTC using open-source technology



Officer marking

Cont	SIKU2985000 -GREY	nan	04-09-2023
Goods Description	nan	IGM No	2342712
		IGM Date	nan

Scanned Time  
20:56:06  
Type  
nan



NCTC AI identification precisely as Cigarettes



## Trade Facilitation : Path to Promptness

- Voluntary Compliance
- Use of Technology for Precise Targeting and Facilitation
- Smart Enforcement through NII Technologies



# Thank You

## AUTHORIZED ECONOMIC OPERATOR PROGRAMME

