

**SPECIAL SECRETARIAT OF THE FEDERAL REVENUE OF BRAZIL
RFB**

ELECTRONIC CERTIFICATE OF ORIGIN

**WCO GLOBAL FORUM ON ORIGIN
INTERCONNECTIVITY**

**KELLY
MORGERO**

2025



ELECTRONIC CERTIFICATE OF ORIGIN



ARGENTINA



BRAZIL



PARAGUAY



URUGUAY



**New MERCOSUR
Regime of Origin**



COLOMBIA



ALADI

Business Process Flow

1



APPLICANT



2



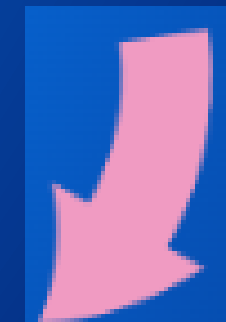
ISSUING
AUTHORITY



3



DECLARANT



5



4

OUR SYSTEMS

SISCOIMAGEM

It has been operational since 2017.

INDIRA

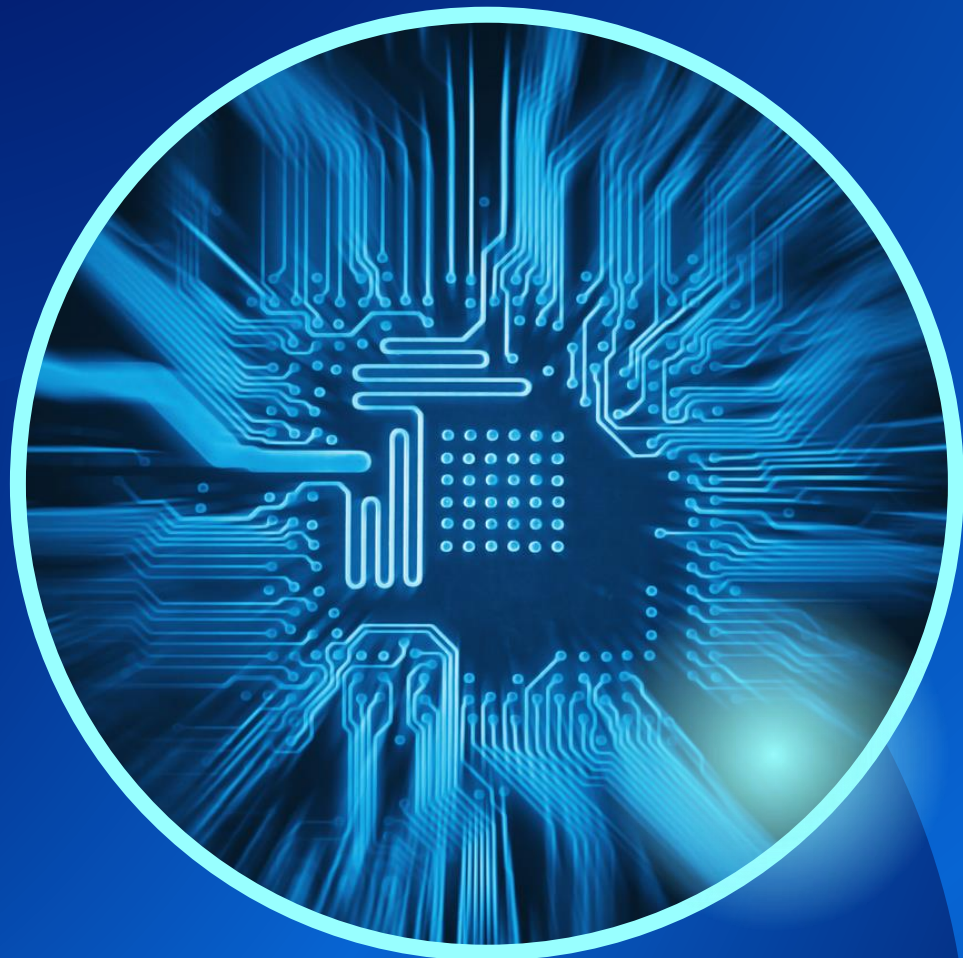
INFORMATION EXCHANGE SYSTEM

LPCO

National Single Window



e-CO System



KEY FEATURES

General security requirements

- Access to the system requires prior registration in the Siscomex representatives database.
- Legal representatives, customs brokers, and pre-registered staff can operate the system.
- Digital certificates (ICP-Brasil) are mandatory for secure access and authentication.

SYSTEM VALIDATIONS



**Ensures
authenticity
through
digital
signatures**



**Verifies the
validity and
integrity of
the
information**



**Ensures the
user is
authorized
to represent
the importer**

- ❖ **Authenticity**
- ❖ **Integrity**
- ❖ **Non-repudiation**

HOW TO SUBMIT AN e-CO

01

Enter the registration number

02

Select the e-CO file

03

Use a digital certificate for signing the document

04

Submit and confirm with the digital certificate PIN

05

The system validates the e-CO and provides a confirmation

MAIN FUNCTIONALITIES



**Submission of
the e-CO**



**Check the status and
history of e-CO
submissions**



**Amendment to
e-CO**

Origin Verification

Clearance

PCA

e-CO for Exports



48 issuing authorities



Operations throughout
the national territory



Ministry of Development, Industry, Commerce, and Services (MDIC)

TRADE FACILITATION

THANK YOU!



kelly.morgero@rfb.gov.br



Receita Federal