



**World Customs
Organization**

Interconnectivity Framework for Certificates of Origin

Chunxiao XU

Technical Attaché, Origin Sub-Directorate, TTA
World Customs Organization

WCO Global Forum on Origin Interconnectivity

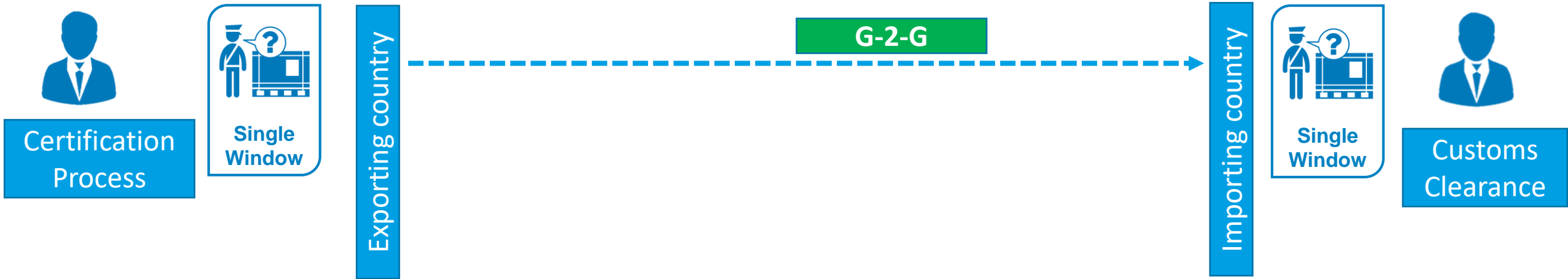
WCO Headquarters, 3-4 February 2025



www.wcoomd.org

www.wcoomd.org

- 84 Customs Administration responded to the Survey.
- 22 Members have reported that they have implemented origin data exchange programmes, and another 9 Members have reported that they have started pilots.
- The practices observed in multiple regions



• Benefit G2G Cooperation and Digitalization of CO:

- Eliminate the use of paper
- Speed up the process around origin certification
- Increase data quality, reliability, and accuracy
- Mitigate certificate fraud
- Enable advance risk management as the certificate is available before the arrival of shipments
- Increase transparency and compliance

Before establishment

Mutual agreement with contracting parties

Alignment of the technical standards and specifications with the contracting party

Domestical challenges: legal basis, system improvement, exporters and Customs' awareness, etc.

After establishment

Conduct system monitoring

Harmonize different Agreements

Advance the system with other FTA contracting parties

Objective:

Establish an interconnectivity framework for Certificates of Origin

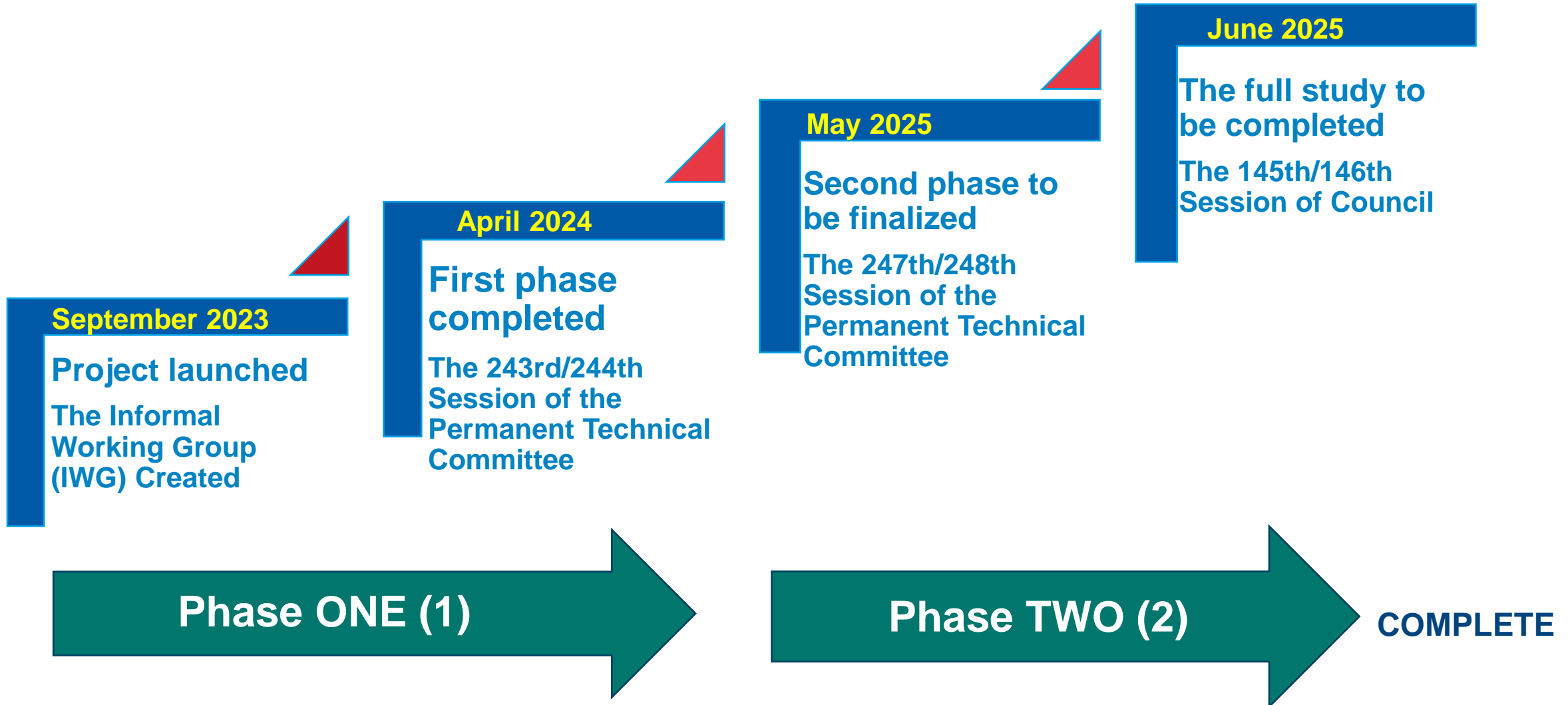
Business Process Model (BPM)

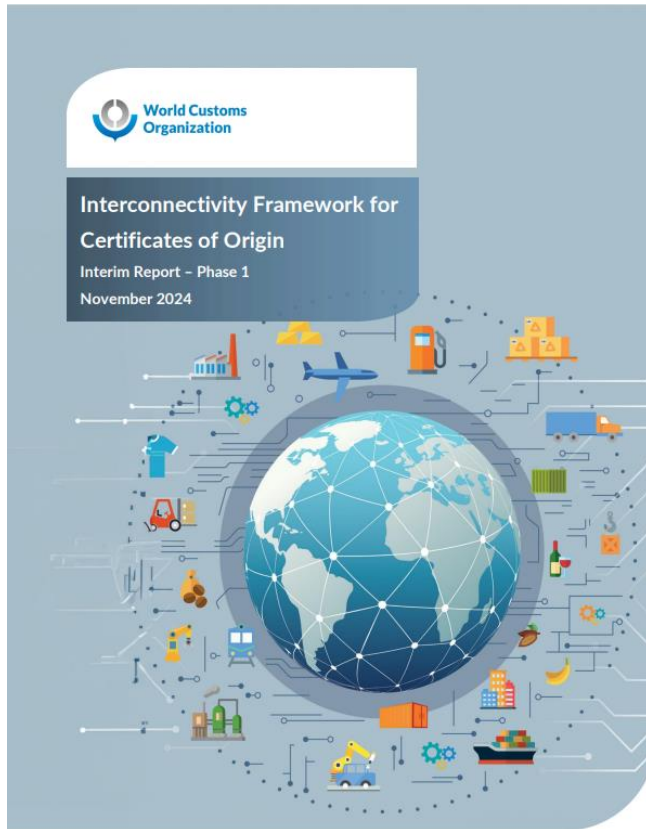
E-CO Dataset

Globally Networked Customs (GNC)

Legal Framework and Compliance

Technological Specifications and Requirements





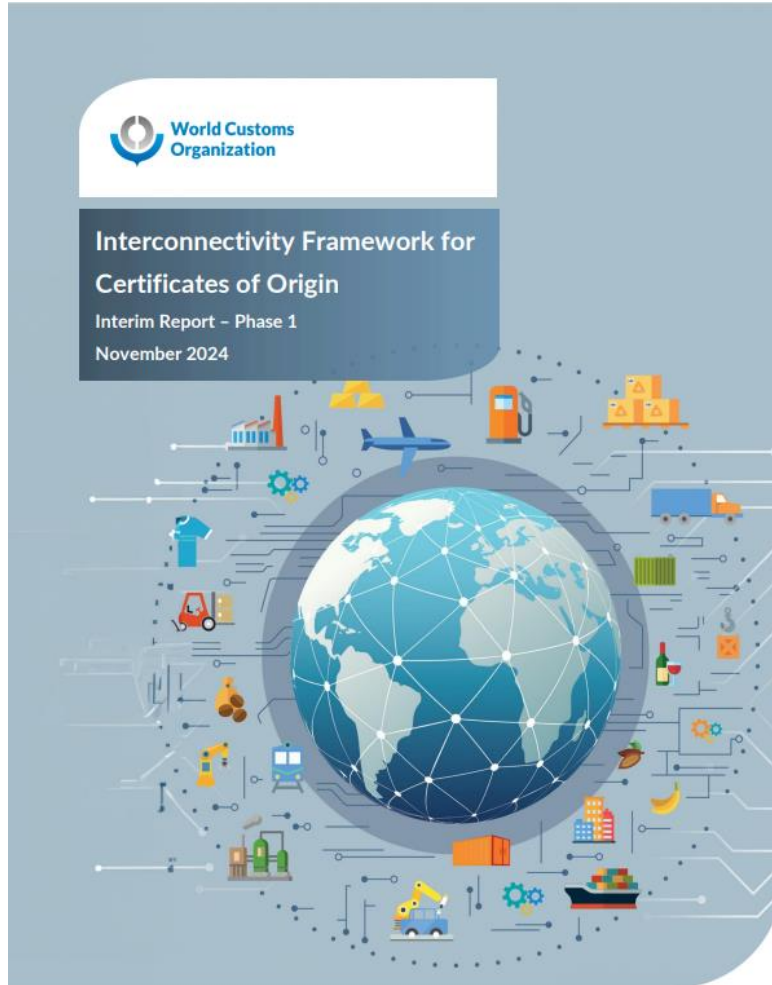
www.wcoomd.org

Business Process Model

- Push Model
- Pull / Semi-Pull Model

Dataset for E-CO

- Maximum Dataset
- WCO Data Model



www.wcoomd.org

www.wcoomd.org

Main Content (2 Elements)

Annex I: Business Process Description

Annex II: Data Elements to be Exchanged

Annex III: Semi-Automated Pull Model for Certificate of Origin

Annex IV: Push Model for Self-Declaration of Origin

Legal Framework and Compliance

- Legal framework
- FTA Practice
- IWG Members Practice

Technological Specification and Requirement

- Standardize approach
- IWG Members Practice
- Comparative Information

Main Content (4 Elements)

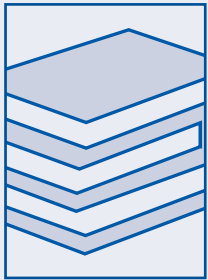
Annex I: Business Process Description

Annex II: Data Elements to be Exchanged

Annex III: Semi-Automated Pull Model for Certificate of Origin

Annex IV: Push Model for Self-Declaration of Origin

Annex V: Comparative Information on Technological Specification on CO Interconnectivity



Keep Refining the Framework



E-learning Course Development



Training and Capacity Building



**World Customs
Organization**

Thank you!

Chunxiao XU

Chunxiao.xu@wcoomd.org

Technical Attaché, Origin Sub-Directorate, TTA
World Customs Organization



www.wcoomd.org