

Onur HALILOĞLU

Co-Founder | CEO

✉ onur.haliloglu@msspektral.com

🌐 www.msspektral.com

Engineer & entrepreneur in advanced imaging and security technologies

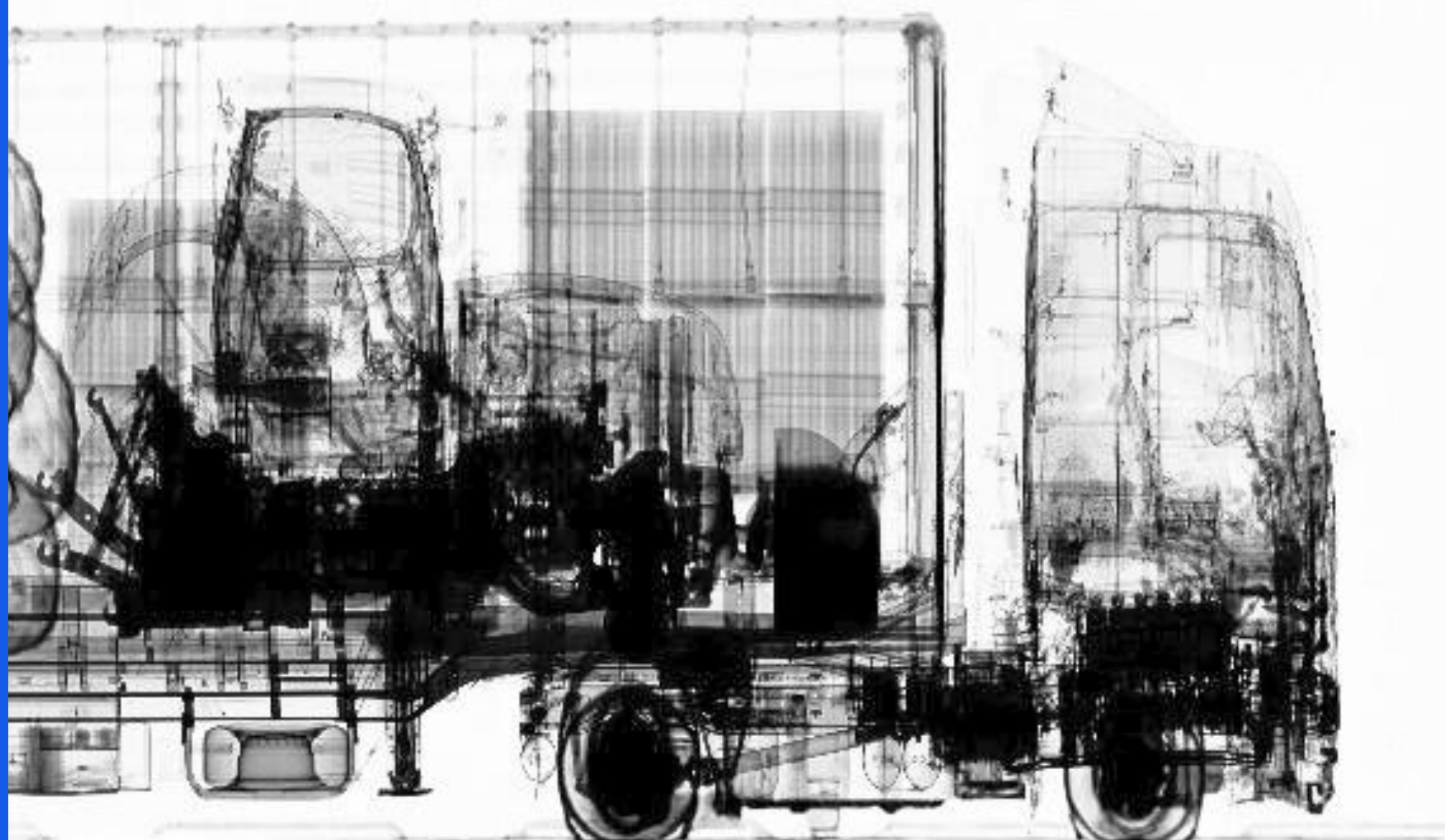
Electrical & Electronics Engineering (METU), PhD

Former TÜBİTAK researcher (satellite & electro-optical systems)

Co-Founder & CEO of MS SPEKTRAL (2014)

Leads X-ray truck & container scanning systems for Customs and borders





The Invisible War Behind NII Data

Modern trade corridors are not only physical, they are digital and data-driven.

In today's trade corridors, the real battlefield is not the scanner itself, it is the inspection data.



The Risk

Fragmented Data in a Connected World

When inspection data is fragmented, security gaps emerge, not only between systems, but between institutions.

UFF as the Foundation of Trust

Standardization is not a constraint, it is a security enabler.



Data Integrity



Traceability



Auditability

