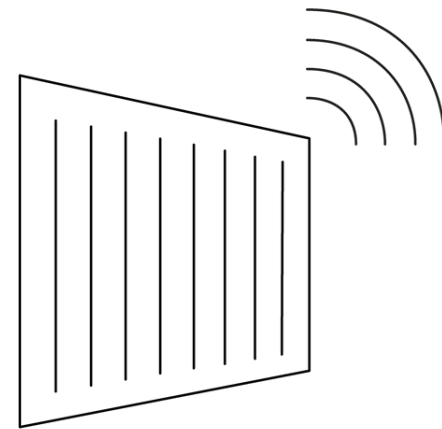


**SMART  
CONTAINER  
ALLIANCE**



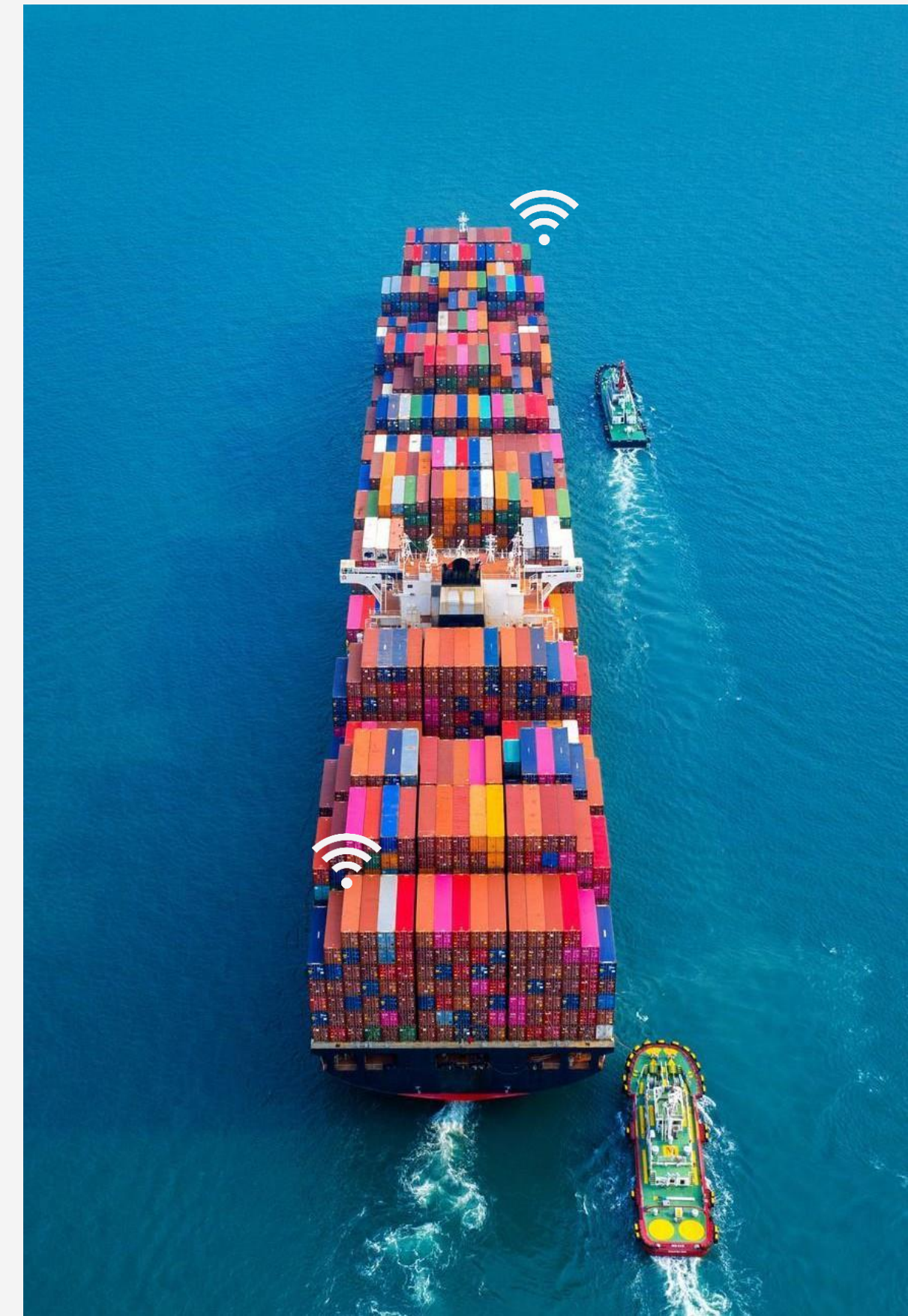
**Cargo Control: the  
missing piece of  
the puzzle.**



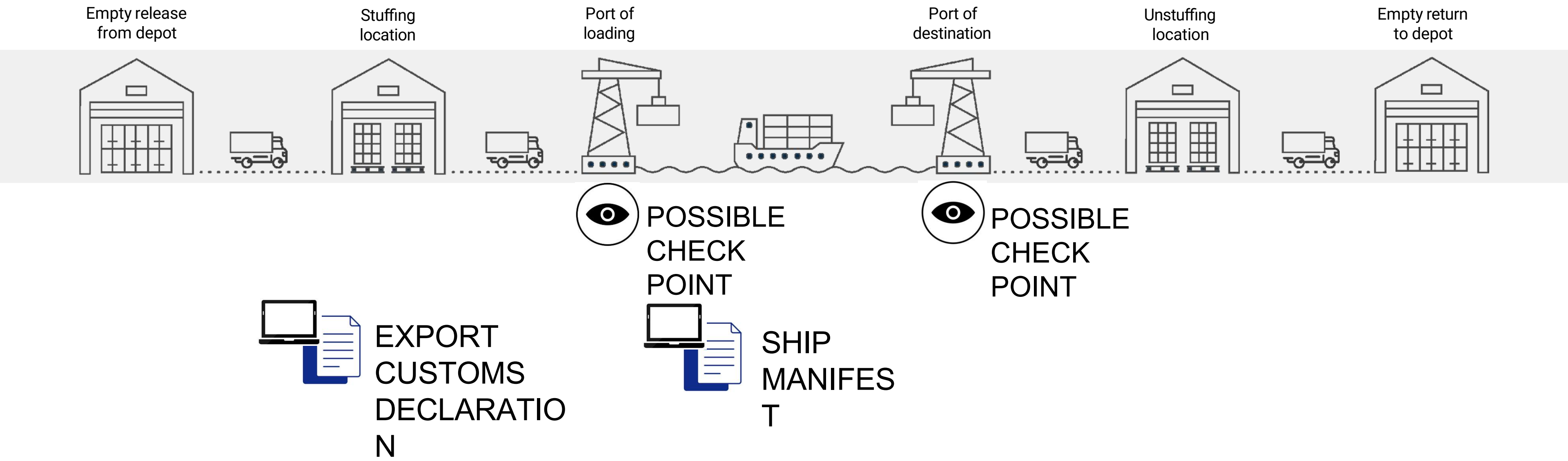
**ORBCOMM®**



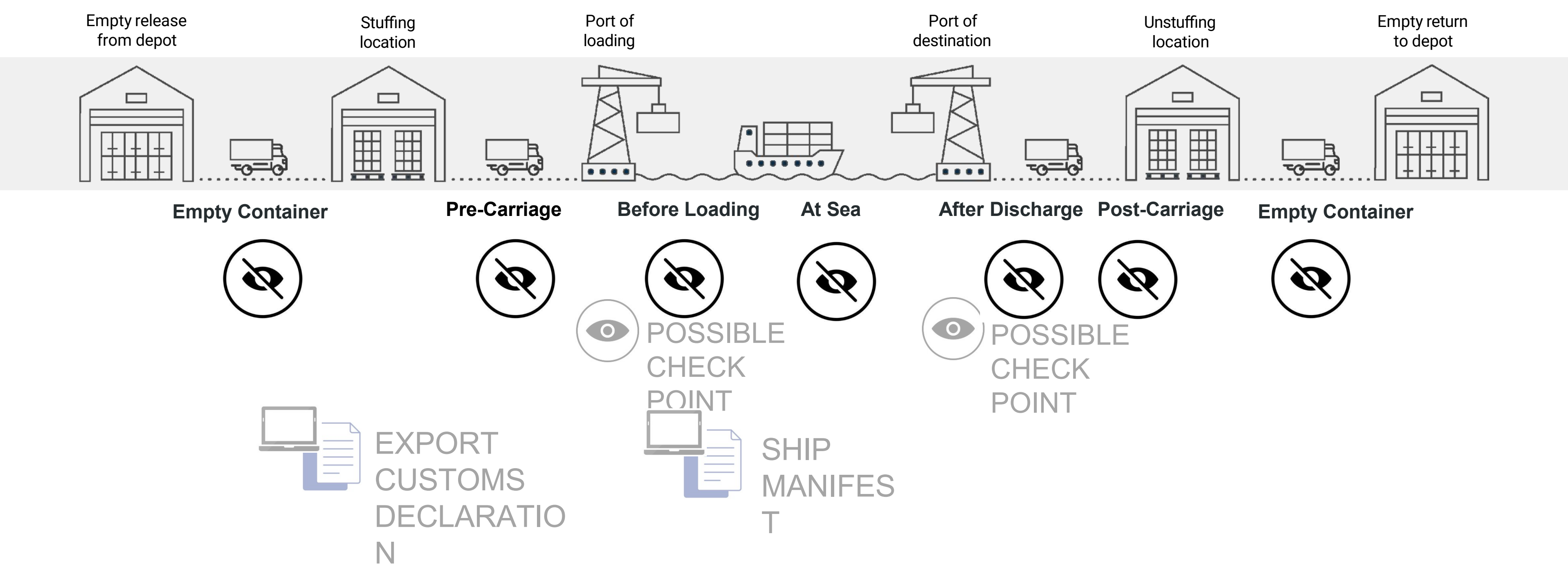
**ne>>>iot**



# WHY THIS MATTERS

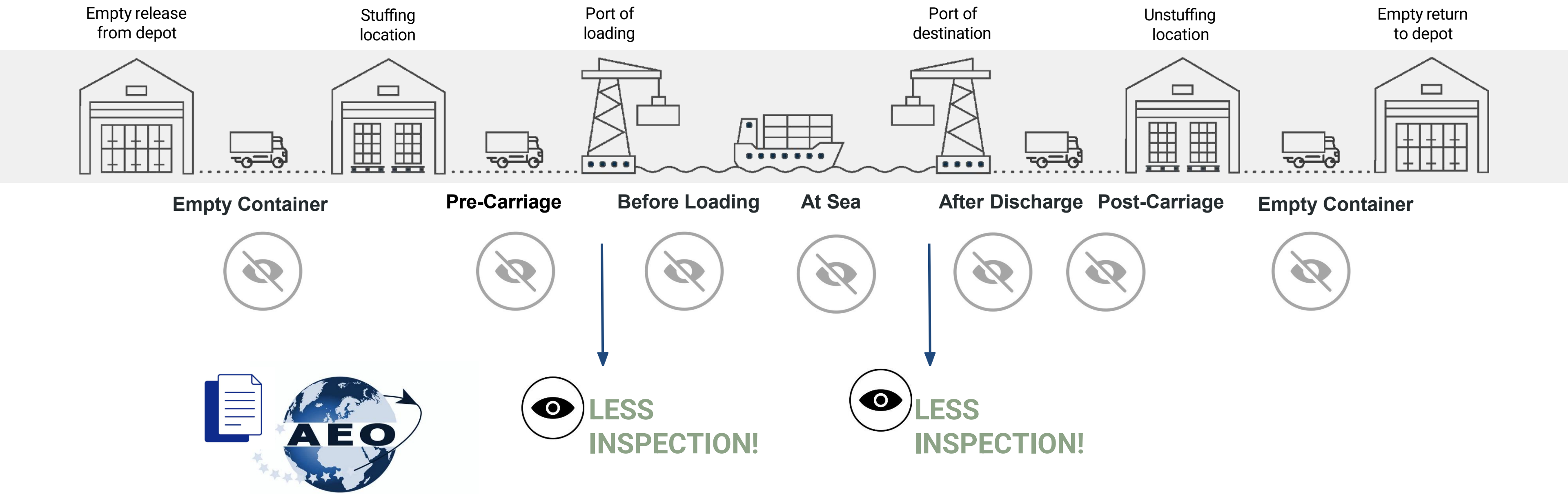


# WHY THIS MATTER

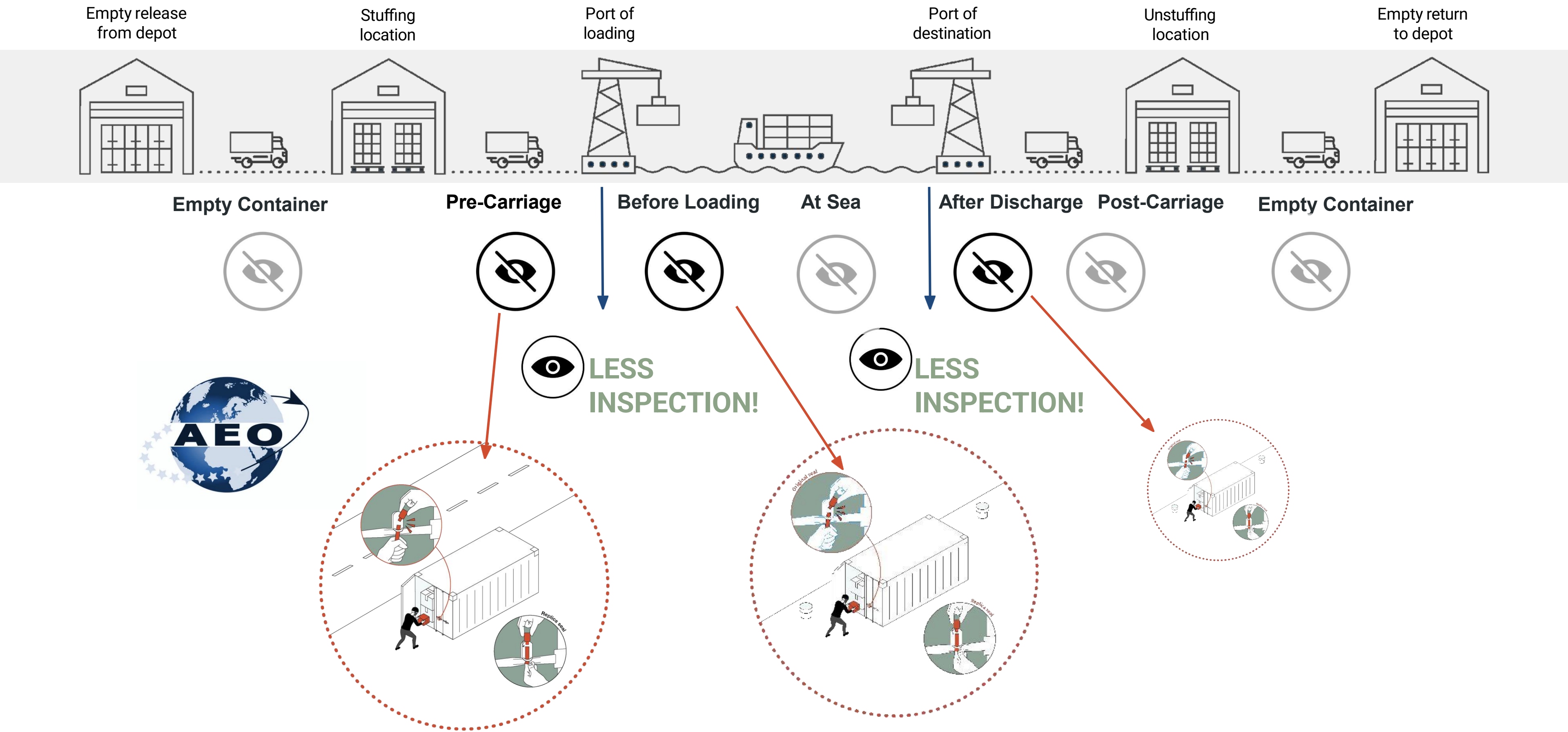




# AEO PROGRAMMS: THE ANSWER?



# AEO PROGRAMMS: THE TARGET...



# FROM TRUST IN TRADERS TO TRUST IN THE JOURNEY



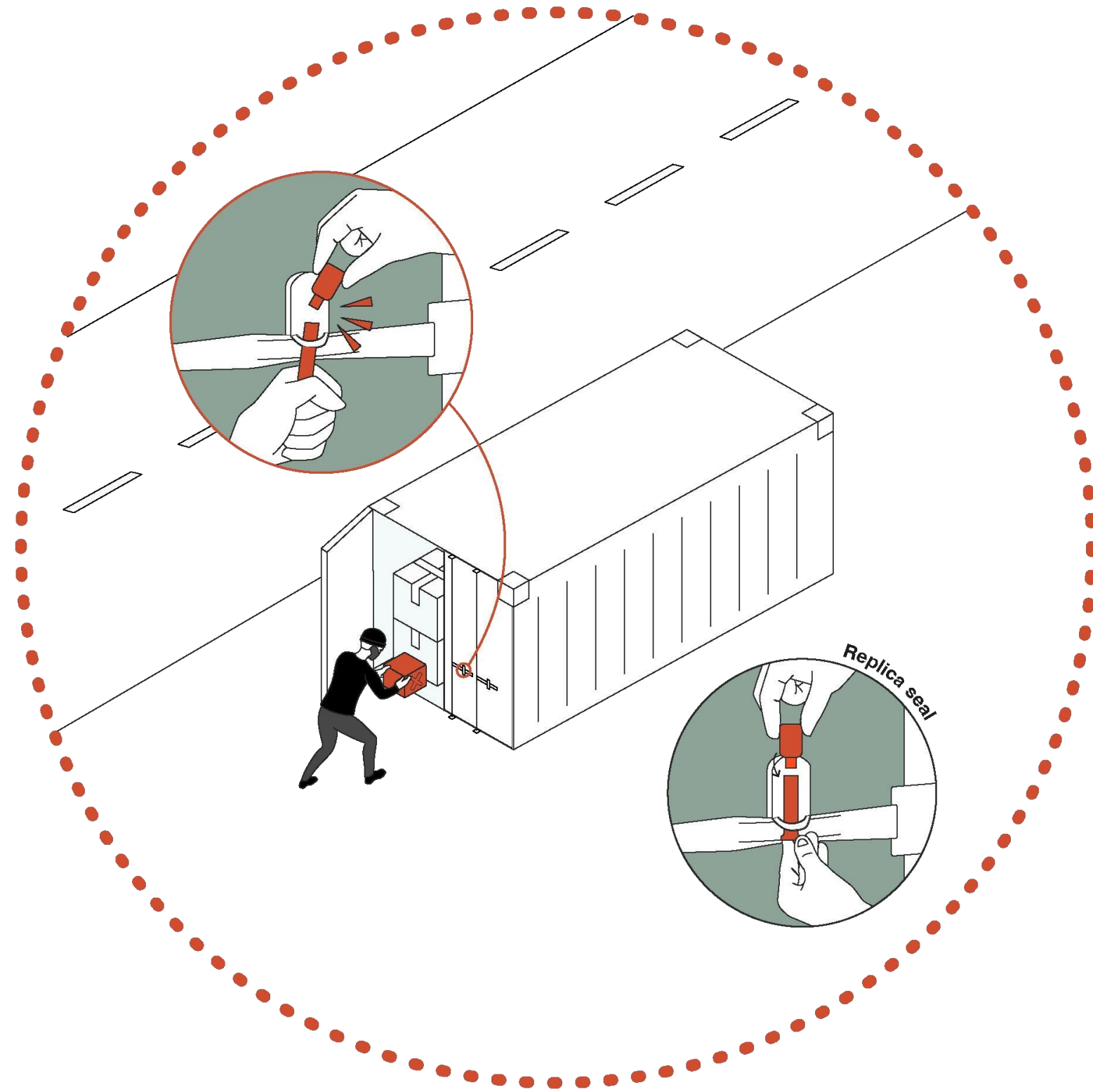
REPORT

## Infiltration of maritime cargo supply chains

Organized crime, cocaine and the internal conspirator

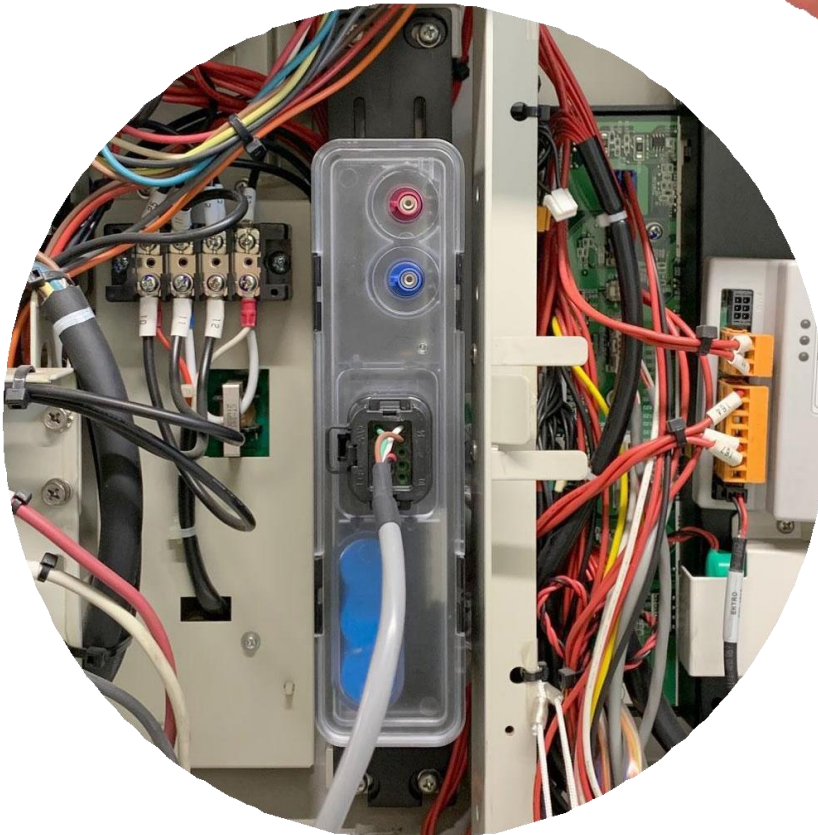
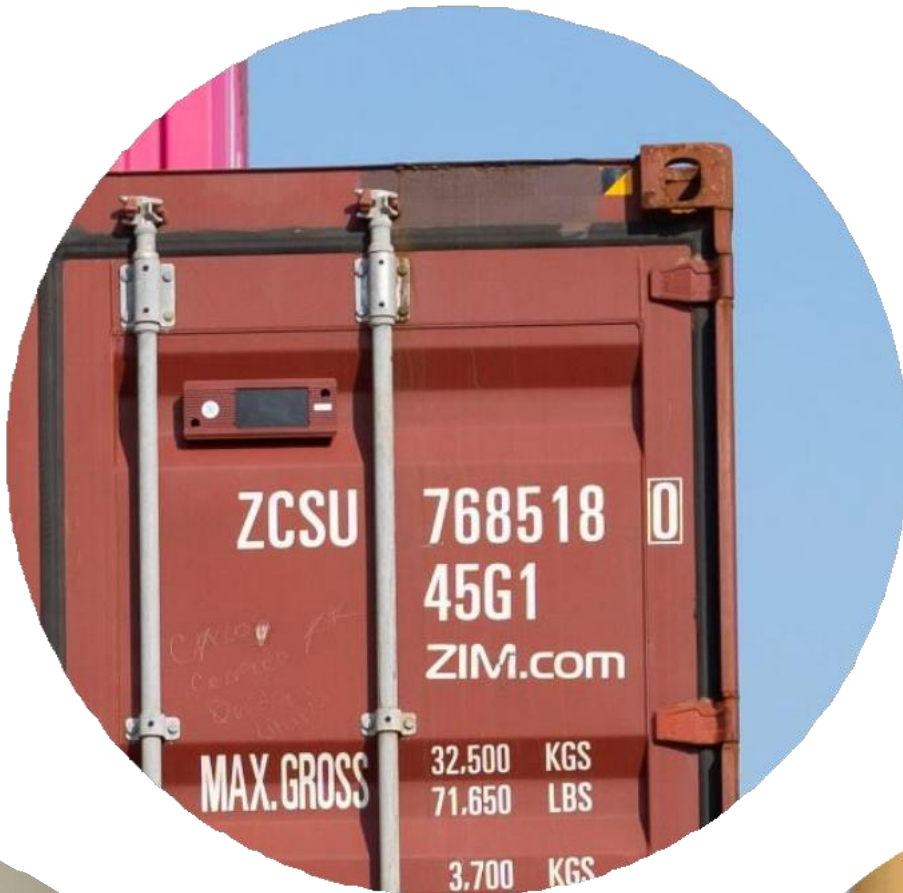
Container rip on - rip off or 'rips'

**767 seizures /  
378.4 tonnes**





# SOLUTIONS READY ON THE FIELD





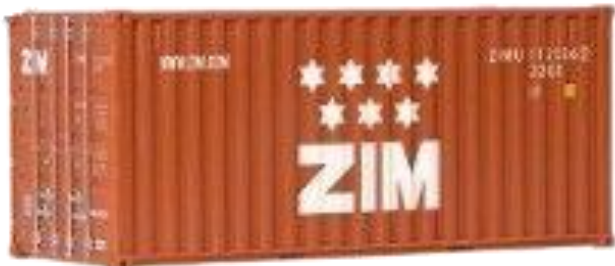
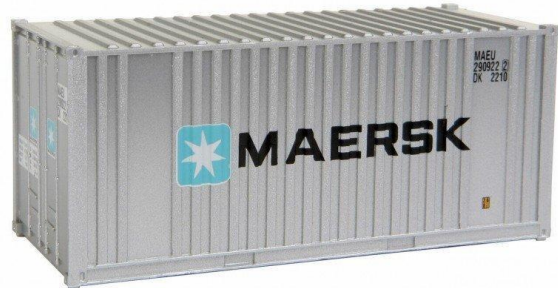
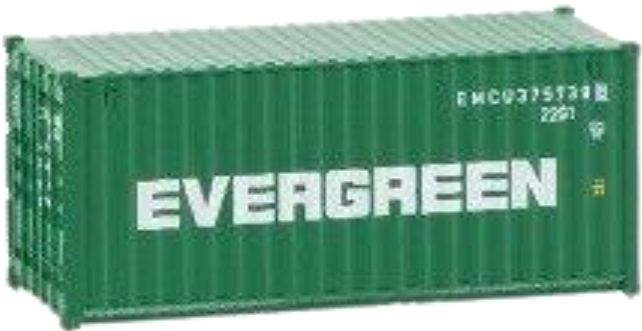
# DEPLOYMENT ACROSS SHIPPING LINES



Dry  
deployment



Reefer  
deployment





## SOME OF YOU ARE ALREADY FAMILIAR WITH THE DATA

*“Having the ability to monitor live container movements allows customs to more efficiently identify high-risk cargo.”*



U.S. Customs and  
Border Protection

*“This is a very significant tool to support law enforcement in the battle against organised crime.”*



Australian  
**BORDER FORCE**

*“Live monitoring of container movements using smart seals/smart containers also complements the concept of Smart Secure Trade Lanes.”*



Customs Administration of the  
Netherlands  
*Ministry of Finance*

## AND WITH ITS RESULTS

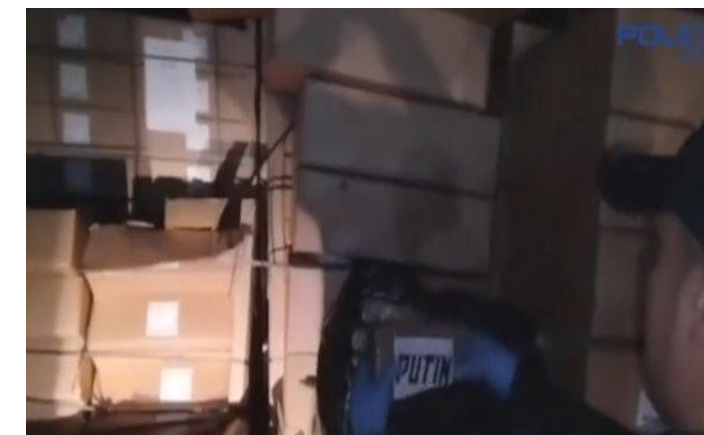


Approx  
**68 000**  
**containers**

equipped in Ecuador  
over the last 4 years

Approx  
**32 TONS**

found in 22 seizures  
by customs using real time  
smart container data



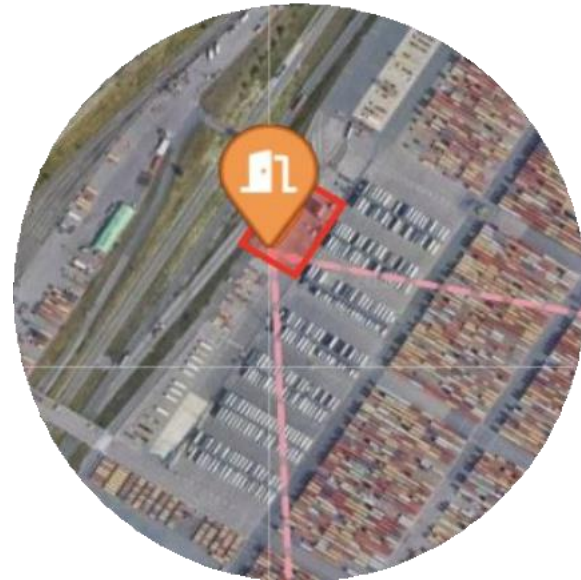


# HOW? CONTAINER MOVEMENTS UNDER SUPERVISION



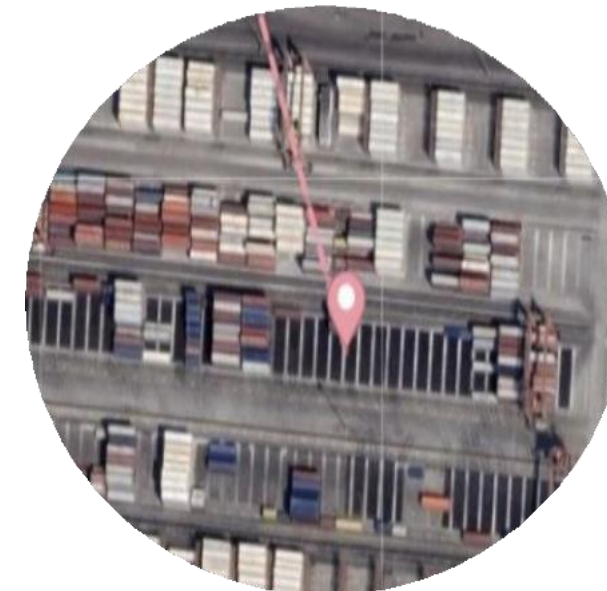
## Acurate geolocation & geofencing

Entry and exit in defined zones



## Dwell & motion detection

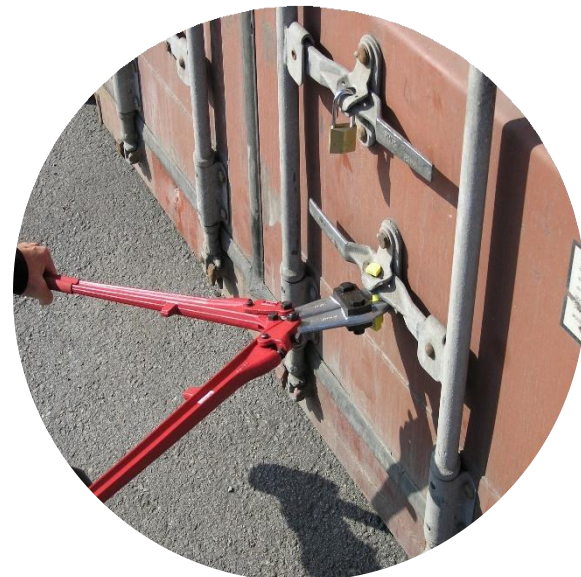
On the road or at terminal



## Door opening detection

*Expected or  
Unexpected*

According to the zone, time,  
previous events...



## Device tearing/tampering

Abnormal action on the device  
are also detected

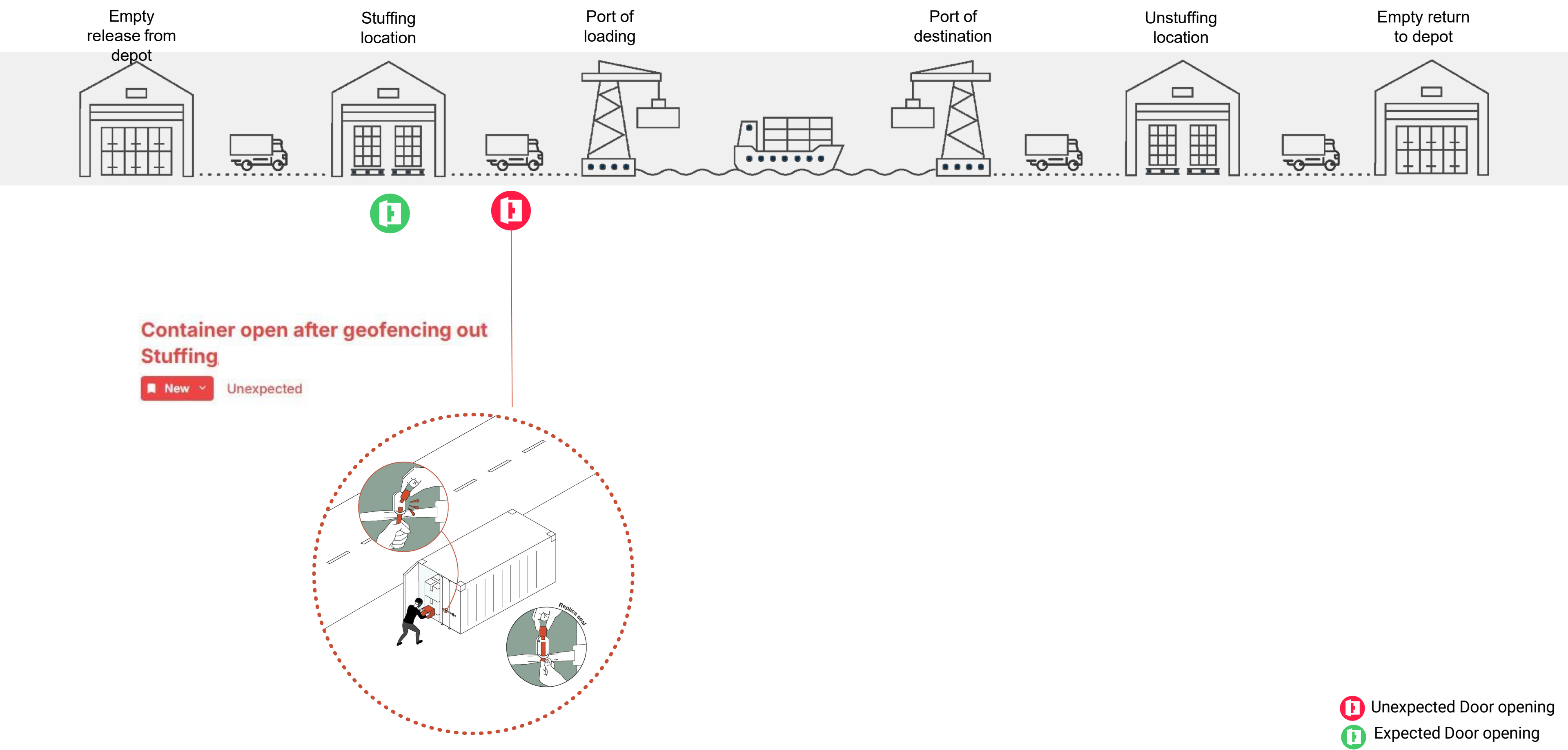


# REGAIN VISIBILITY WITH EXCEPTION DETECTION

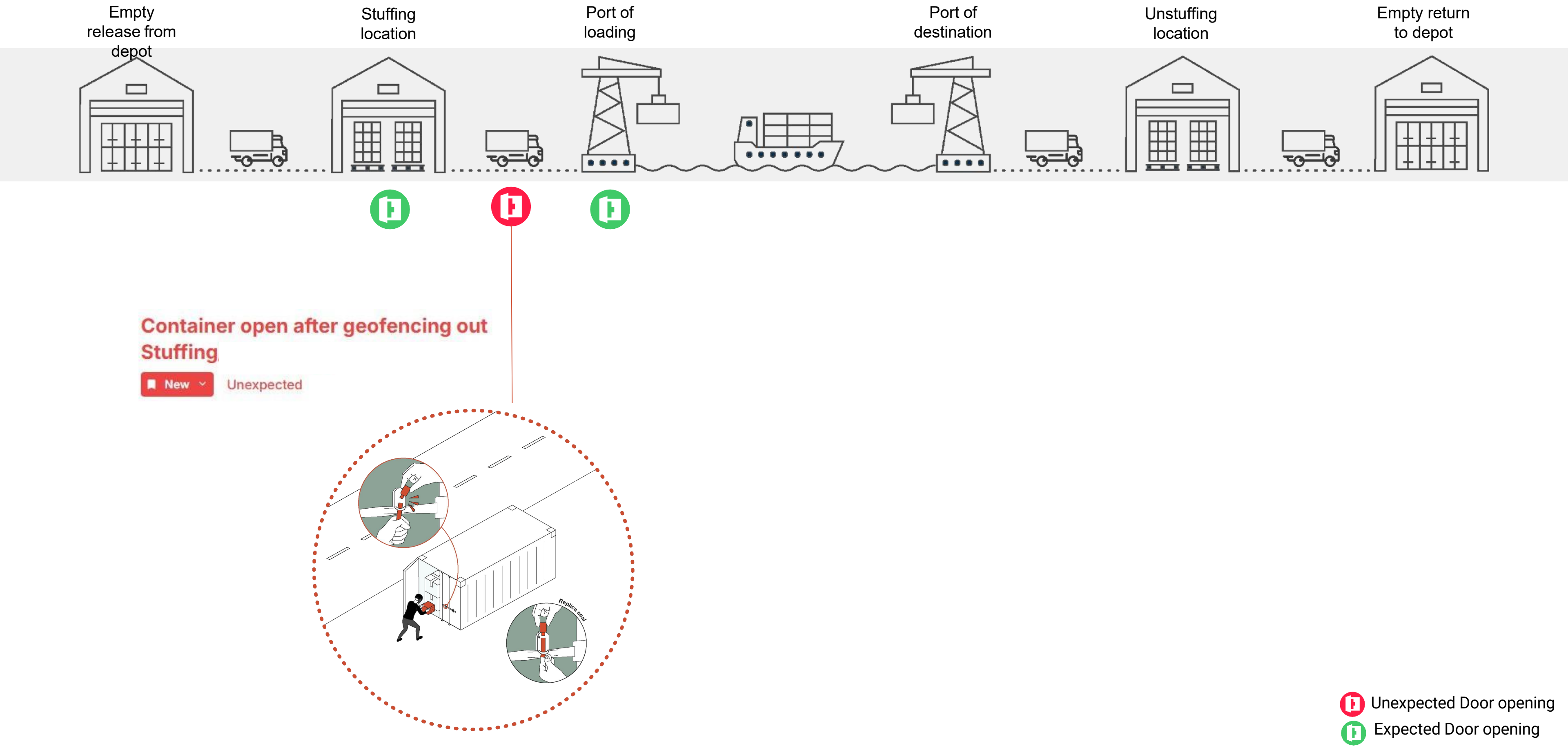




# REGAIN VISIBILITY WITH EXCEPTION DETECTION



# REGAIN VISIBILITY WITH EXCEPTION DETECTION



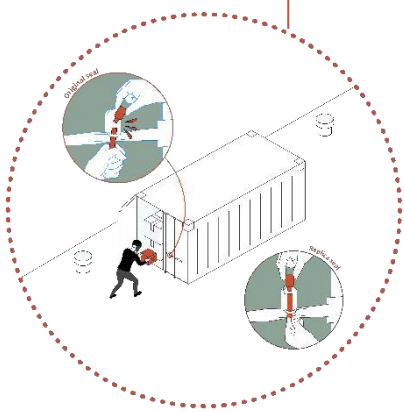
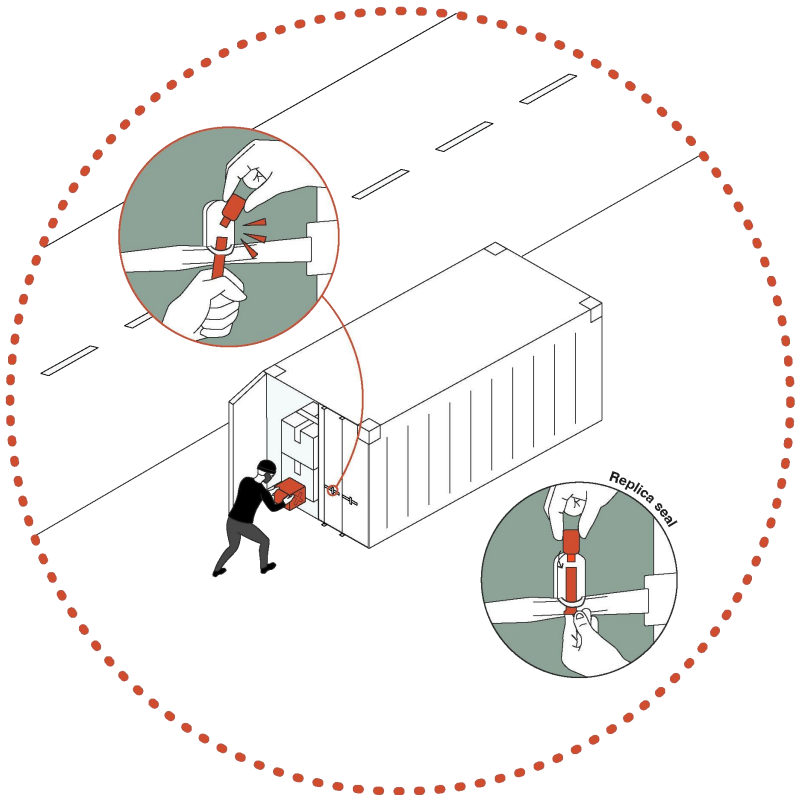


# REGAIN VISIBILITY WITH EXCEPTION DETECTION



Container open after geofencing out Stuffing

New Unexpected



Container open on terminal

New Unexpected

Opening duration 26s  
Last tracking status Gate in  
Last tracking status date 2026/01/08 18:21

Unexpected Door opening  
Expected Door opening



**Watch results in  
action**



# THE WCO GETS IT

The World Customs Organization has formally recommended that Customs administrations adopt smart containers and other smart security devices.



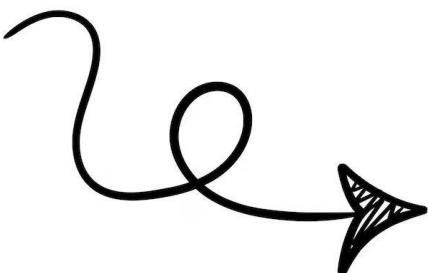
*Customs should apply a seal integrity programme (..) **based on the use of smart security devices** or high-security mechanical seals*  
2.1.2 General Control Measures

*Customs administrations should encourage and facilitate, through appropriate incremental incentives, the **voluntary use by AEOs of more advanced technologies**, including **smart security devices, beyond mechanical sealing***

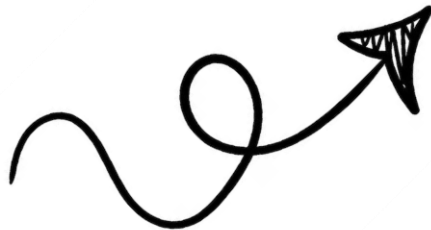


2.4 Standard 4 – Technology

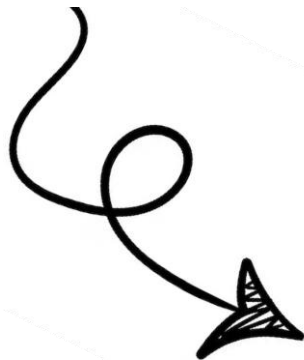
# CONCLUSION: A JOURNEY TO ADOPTION



**INDIVIDUAL  
CUSTOMS  
(incl. top ones)  
ADOPTION**



**NEW  
STANDARDS  
SETTING  
THE  
DIRECTION**



**SECURE  
TRADE LANES  
ENABLING  
AEO  
PROGRAMMS?**



LEARN MORE



**Cédric Rosemont,**  
**President of the**  
**Smart Container**  
**Alliance**

