



ECOWAS COMMISSION  
COMMISSION DE LA CEDEAO  
COMISSÃO DA CEDEAO

---

Abuja• Nigeria• jan 2025

# ECOWAS TRANSIT AND CORRIDOR MONITORING THROUGH AUTOMATED SOLUTION-SIGMAT

---

Aissata KOFFI Head of Customs matters  
DIRECTORATE OF CUSTOMS UNION AND TAXATION



ECOWAS COMMISSION  
COMMISSION DE LA CEDEAO  
COMISSÃO DA CEDEAO

## WEST AFRICA





## LEGAL BASIS

- The ECOWAS Customs code provides the primary legal basis for the automation of the transit procedure in ECOWAS member states in articles 33, 35, 180 and 200-208
- This is amplified in the SUPPLEMENTARY ACT A/SA.2/12/21 ON ECOWAS COMMUNITY TRANSIT adopted on 12 December 2021 which together support the use of Information and Communication Technology (ICT) in facilitating and monitoring transit trade along the corridors.
- Abrogation of the Community legislation regulating road transit:
  - ✓ Convention A/P.4/5/82 relating to Inter-States Road Transit (ISRT) of goods; and
  - ✓ Supplementary Convention A/SP.1/5/90 1990 which created a guarantee scheme for the ISRT including the establishment of National Guarantors and a constitution of guarantee fund.





ECOWAS COMMISSION  
COMMISSION DE LA CEDEAO  
COMISSÃO DA CEDEAO

DIRECTORATE OF CUSTOMS UNION AND TAXATION

SIGMAT VARIANTS

# SIGMAT



## SIGMAT

- The main tool for the automation of the transit procedure in the ECOWAS region is the Interconnected System for the Management of Goods in Transit (SIGMAT)
- SIGMAT is a community project developed by the ECOWAS which allows for the electronic exchange of transit messages among the parties involved in the transit operation based on the interconnectivity of national customs systems.
- It is focused on improving transit conditions along corridors in the region, paying attention to the harmonization and simplification of procedures between member countries, and strengthening Customs cooperation. This supports:
  - ❖ The automation of the customs clearance procedure and establishment of a computerized regional transit system;
  - ❖ Improve intra-community trade and thus establish a climate of confidence in the transit system
  - ❖ Generate statistics to manage risk and improve trade;
  - ❖ Improve operational efficiency in transit operations;



## SIGMAT VARIANTS

### ALREADY IN USE:

- ✓ I : Customs Office (Desktop) Version;
- ✓ II : Mobile Application;
- ✓ III : Regional Rail Version;



ECOWAS COMMISSION  
COMMISSION DE LA CEDEAO  
COMISSÃO DA CEDEAO

DIRECTORATE OF CUSTOMS UNION AND TAXATION

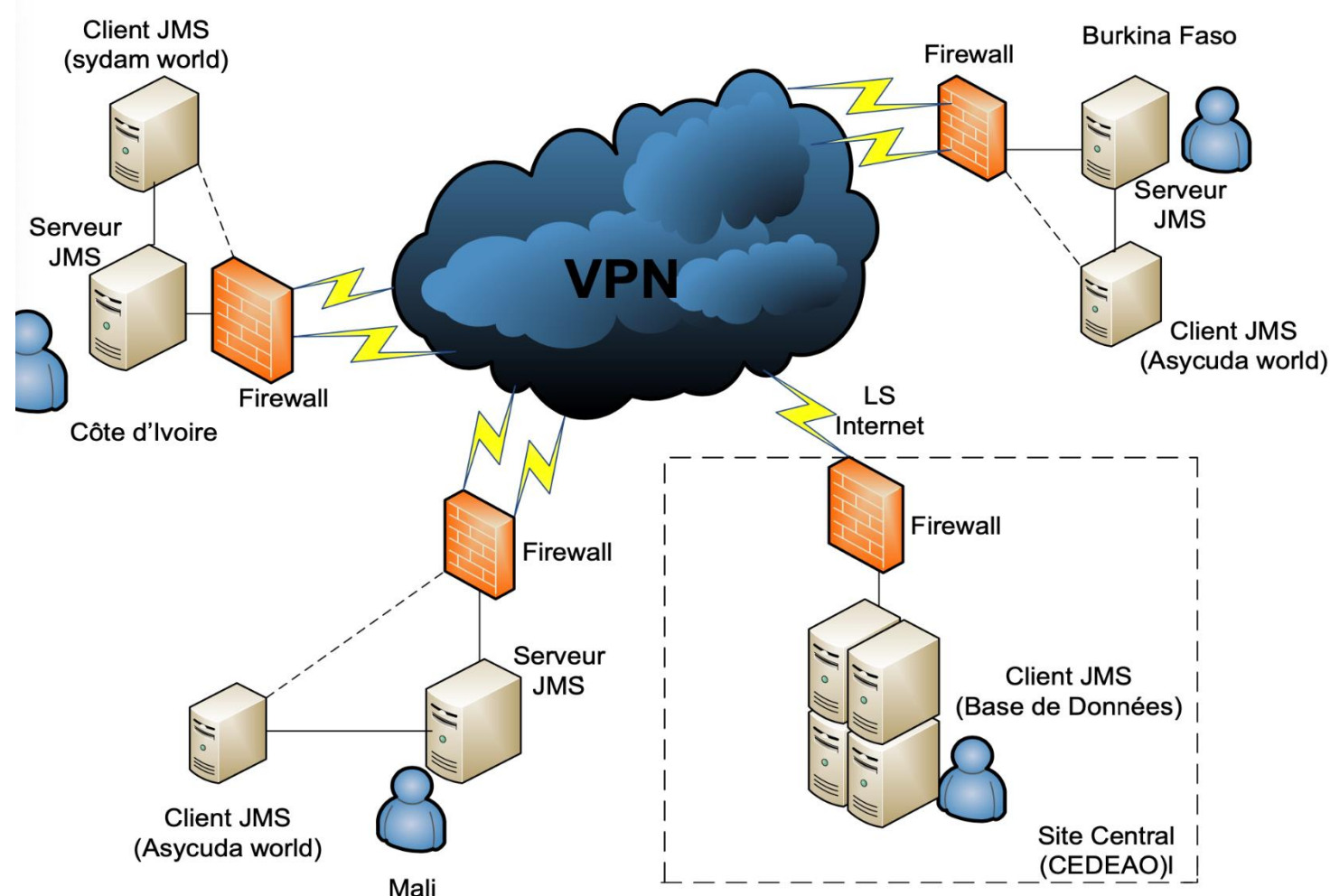
SIGMAT VARIANTS

## HOW IT'S WORKS

## HOW IT WORKS

### SIGMAT Desktop Version

#### ARCHITECTURE DISTRIBUEE



- ✓ Given the objective of connecting different countries, the project initially implemented a VPN (virtual private network) taking into account that it is a relatively inexpensive interconnection solution.
- ✓ Initially the project envisaged the existence of a site located in the Community Computer Center (CCC) in Lomé, which would function as a backup site. Today the SIGMAT e-HUB is already online and testing has already started with some selected MS





STATUS

## IMPLEMENTATIONS STATUS

### FULLY ONLINE

TOGO

NIGER

COTE D'IVOIRE

Burkina Faso

BENIN

GHANA

### DEPLOYED BUT NOT YET ONLINE

MALI

GUINEA

SENEGAL

NIGERIA

ALL CONDITIONS FOR THE  
OPERATIONALIZATION OF  
SIGMAT WERE ADDRESSED

### WAITING FOR DEPLOYMENT

THE GAMBIA

LIBERIA

SIERRA LEONE

GUINE-BISSAU



STATUS

## IMPLEMENTATIONS STATUS (cont.)

### SIGMAT Hub / e-CO HUB

- ✓ Start of Deployment of CCC equipment's (servers, firewalls, switches) in Lomé
- ✓ Internet and electricity equipment

Most Important..... we start testing

NIGERIA

SIERRA LEONE

COTE D'IVOIRE

BURKINA FASO

GHANA

LIBERIA

THE GAMBIA

NIGER

GUINE-BISSAU



ECOWAS COMMISSION  
COMMISSION DE LA CEDEAO  
COMISSÃO DA CEDEAO

DIRECTORATE OF CUSTOMS UNION AND TAXATION

## WAY FORWARD

- ✓ I : Community Guarantee Management System;
- ✓ II : Transmission of the Electronic Certificate of Origin



ECOWAS COMMISSION  
COMMISSION DE LA CEDEAO  
COMISSÃO DA CEDEAO

---

# THANK YOU

---

