



WCO Technology Conference & Exhibition

Implementation of an Artificial Intelligence - Based Selection System for Enhanced Analytical Model Management and Risk Detection

Marilú Llerena Aybar
National Intendent of Customs
Development and Innovation
Perú



Perú in Numbers:

Scale and Complexity of Foreign Trade



US\$ 60 bn

Imports



44 k

Importers



885 k

Import Declarations

US\$ 87 bn

Exports

10 k

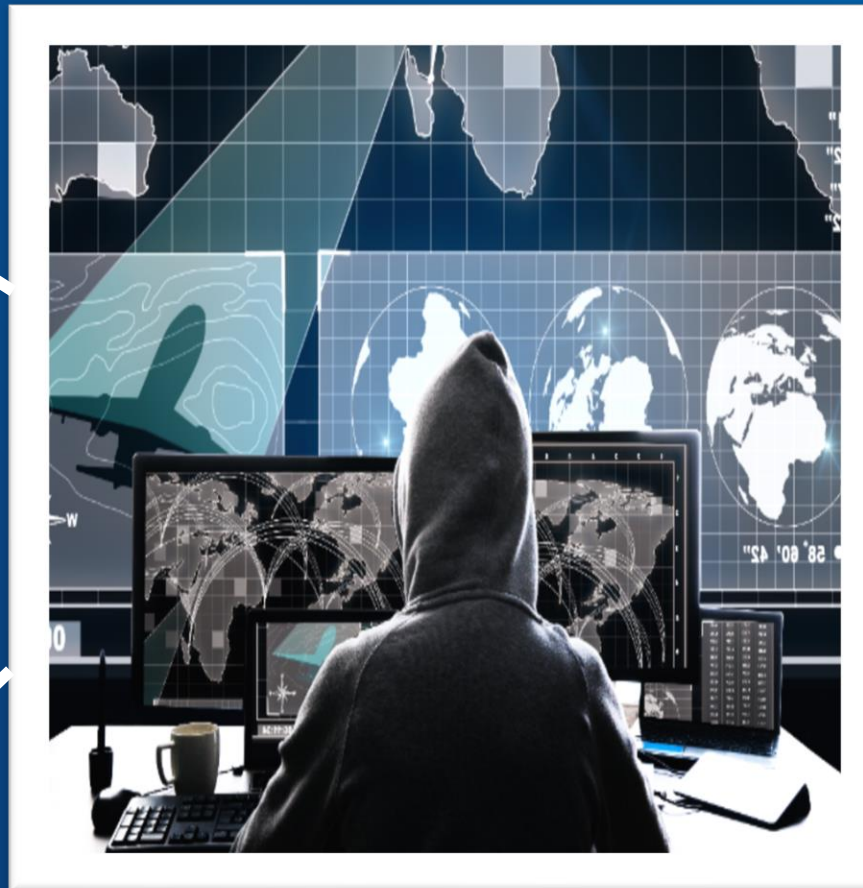
Exporters

441 k

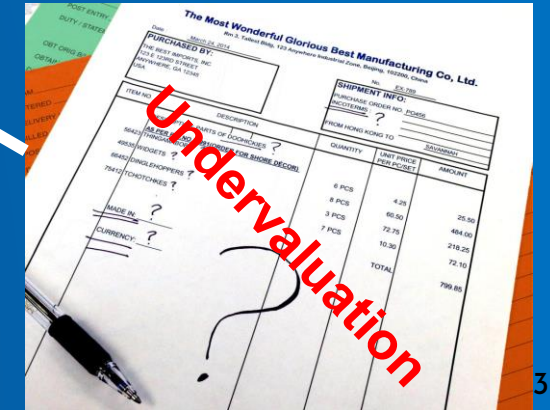
Export Declarations

Customs Offences

21 tonnes of illicit drugs seized



US\$ 115 m contraband seized



Limitations of Isolated Risk Management

Centralized Risk-Based
Channel Selection with
insufficient operational
feedback



Scanner Controls
with Limited
System Integration



Isolated, decentralized
extraordinary Controls



Fragmented intelligence
effort for detection of
international criminal
networks



Perú Integrated Risk Management Strategy

Strategic risk governance

Management of compliance and institutional risks, supported by compliance improvement plans and risk matrices (MGRA)

Technology-enabled controls

Advanced technologies including RFID-based transit control, non-intrusive inspection.

Process and performance optimization

Continuous improvement based on legal framework analysis, KPIs, and efficient use of resources

Intelligence and cooperation.

Information-sharing agreements, reporting and whistleblowing management, coordination with other authorities

Data and information governance

Optimized information management, two-layer analytical ecosystem (Smart Borders), data landing zone, and information security.

Customs Risk Management Framework



1

Risk Selectivity Ecosystem

Detection Maximization
Model

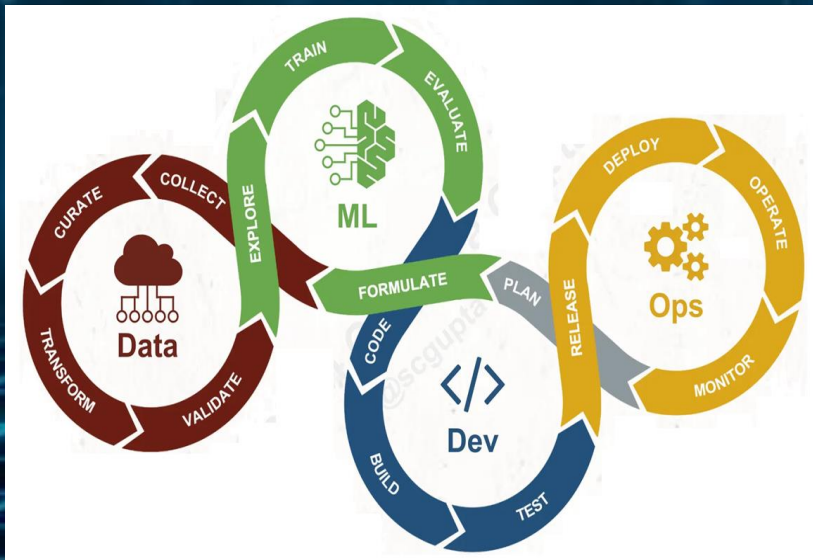
Multi-Variable Risk Filters

Data
Mining
Models



2

2025 MACHINE LEARNING



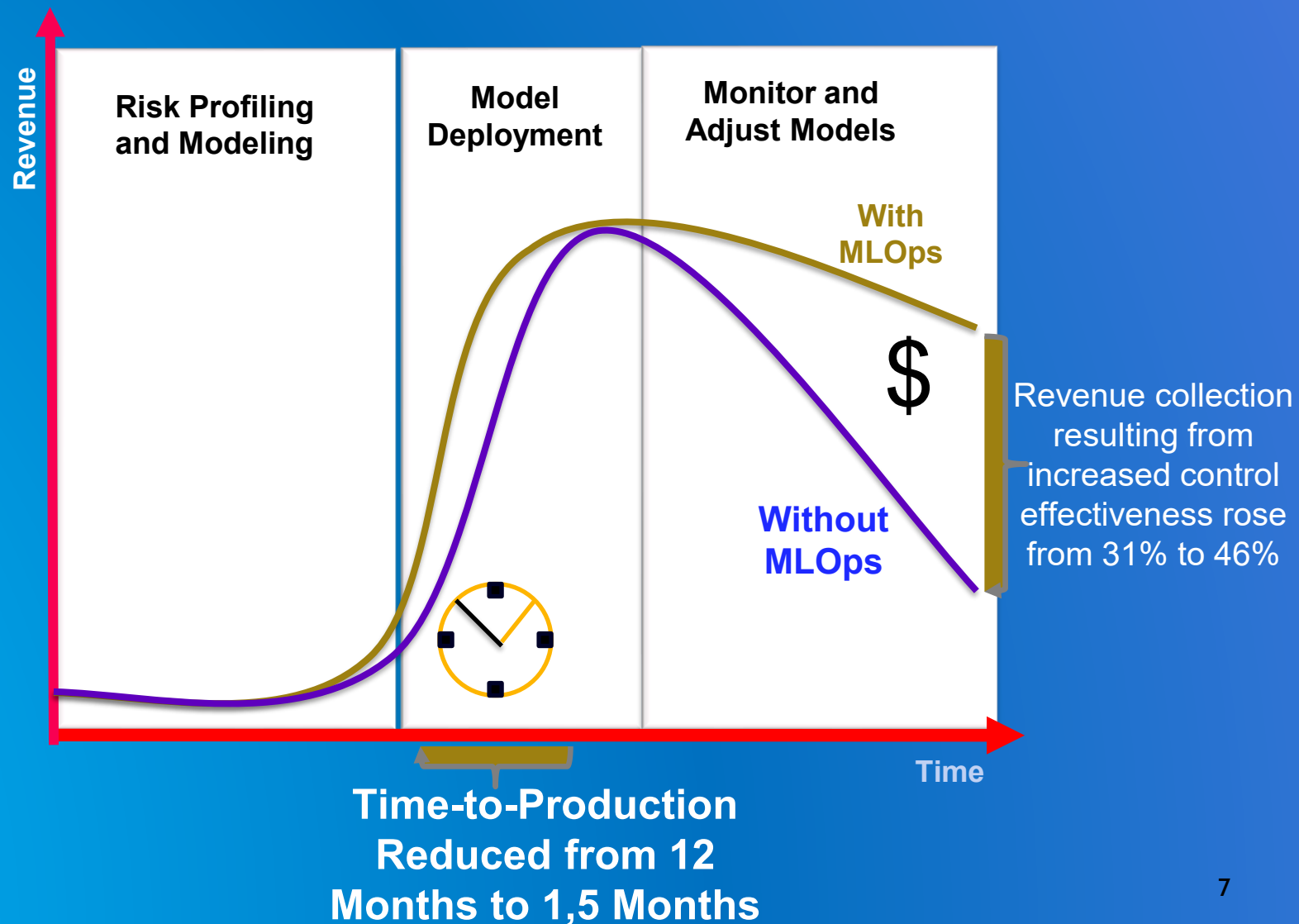
A structured framework to manage the entire lifecycle of Machine Learning (ML) models

Integrates the activities of data scientists, developers, and ML operations teams

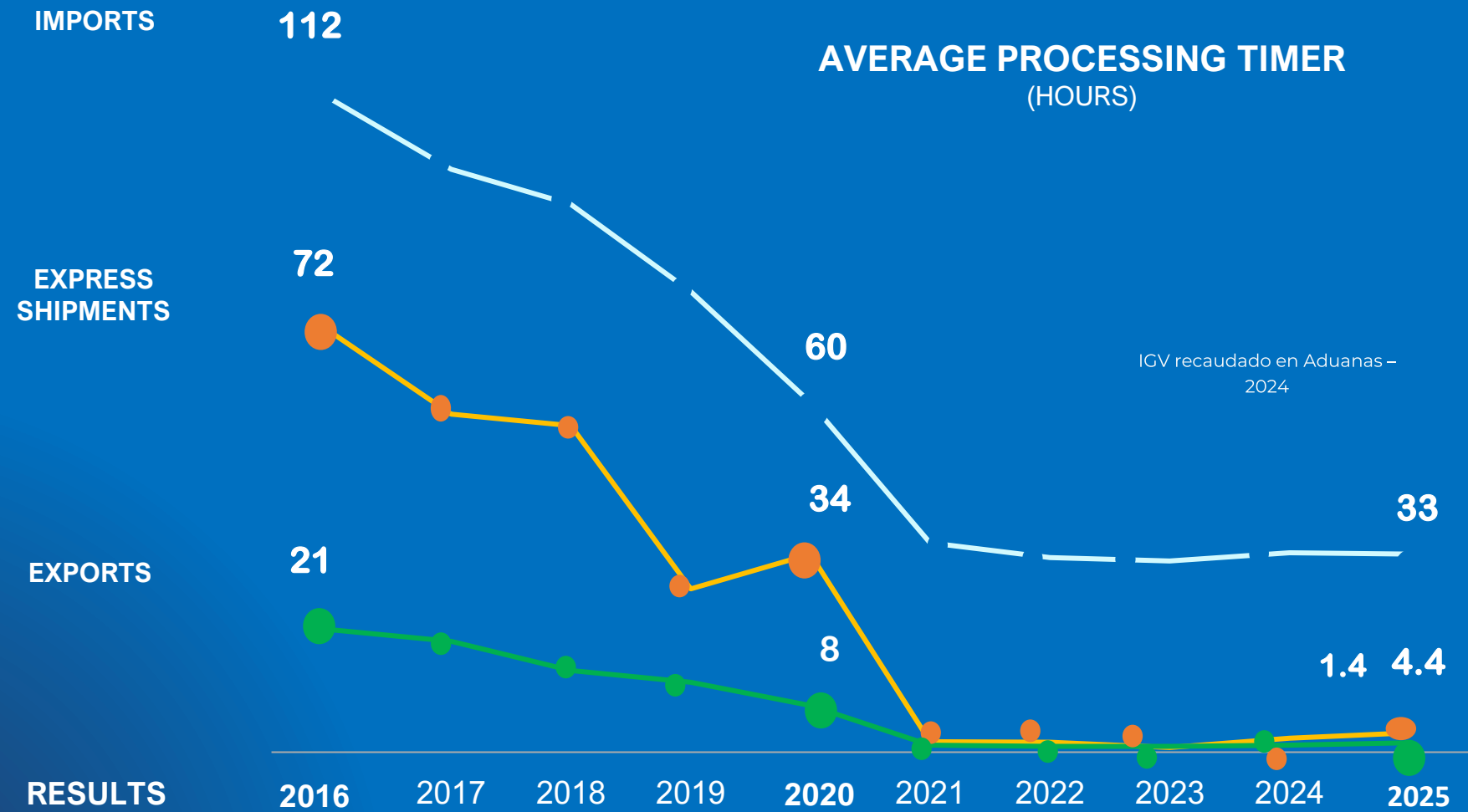
Significantly reduces the time required to move ML models into production

Enables continuous monitoring of predictive performance and model quality

Benefits of the **Customs MLOps Platform**



Improved Competitiveness - Shorter Release Times



RESULTS

PRE-ARRIVAL PROCESSING

2016	2020	2025
30%	73%	87.5%

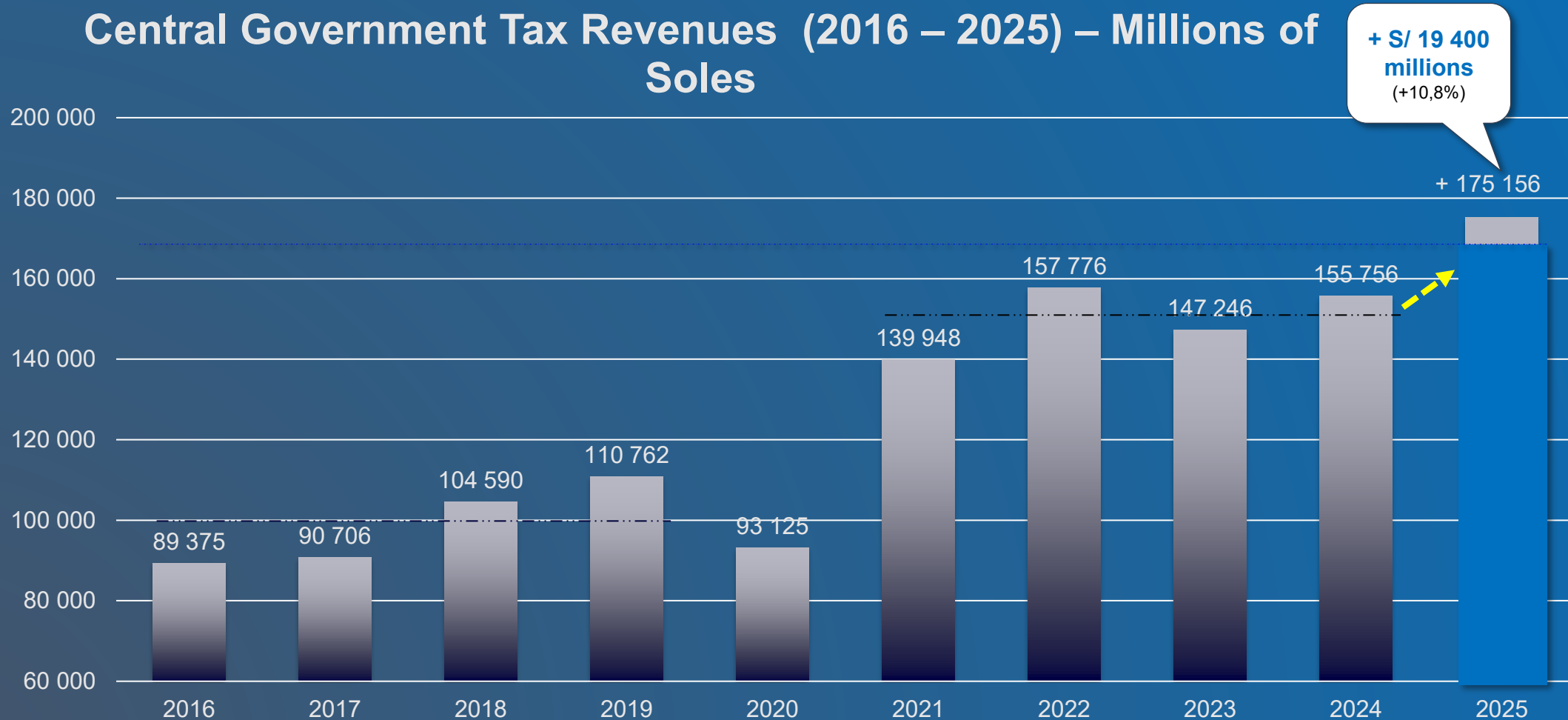
TIME REDUCTION 2016 - 2025

Import.	EER	Export.
70.5%	93.8%	93.3%

Source: SUNAT

2025 Tax Revenue: US\$ 53B (+10,8%)

Central Government Tax Revenues (2016 – 2025) – Millions of Soles



Source: SUNAT

From Data Organization to Scalable Analytics



Limited skills in modern technologies and programming languages



Insufficient storage capacity to run new analytics and ML models



Transition to a Data Landing Zone



Evaluate on-premise data center vs. Cloud solutions





SHUKRAN

THANKS

GRACIAS

MERCI